

I. RACTERISTICS TABLE

6t

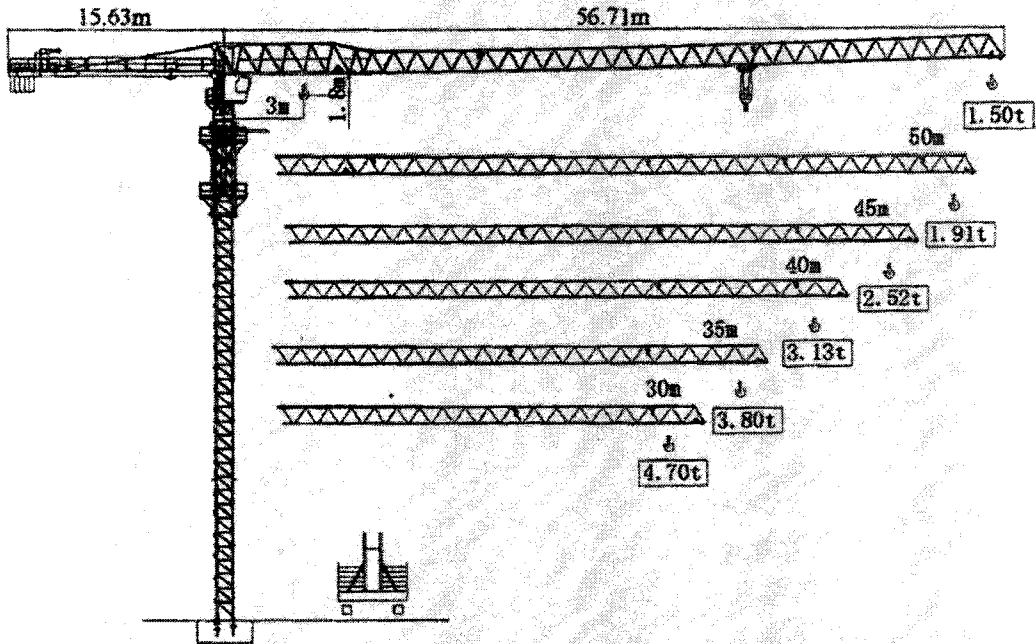


Fig.1-1-1a


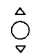
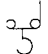
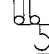
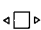

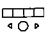
Table 1-1-1a

R	fall	R(max) m	C(max) t	15	20	25	30	35	40	45	50	55
55	IV	6.00	17.26	6.00	5.06	3.90	3.14	2.60	2.20	1.89	1.64	1.44
	II	3.00	31.78	3.00	3.00	3.00	3.00	2.67	2.27	1.95	1.70	1.50
50	IV	6.00	18.83	6.00	5.60	4.33	3.49	2.90	2.46	2.12	1.85	
	II	3.00	34.68	3.00	3.00	3.00	3.00	2.97	2.53	2.18	1.91	
45	IV	6.00	21.11	6.00	6.00	4.95	4.01	3.34	2.84	2.46		
	II	3.00	38.94	3.00	3.00	3.00	3.00	3.00	2.91	2.52		
40	IV	6.00	22.83	6.00	6.00	5.41	4.39	3.67	3.13			
	II	3.00	40.00	3.00	3.00	3.00	3.00	3.00	3.00			
35	IV	6.00	23.52	6.00	6.00	5.60	4.54	3.80				
	II	3.00	35.00	3.00	3.00	3.00	3.00	3.00				
30	IV	6.00	24.2	6.00	6000	5.79	4.70					
	II	3.00	30.00	3.00	3.00	3.00	3.00					



## Crane mechanism specifications

Table 1.1.1-3

Name		Code	m/min	t	m/min	t		kW
Hoisting		24PQC15					400 m >400 m*	24/24/5.5
			0 - 8.5	3	0 - 4.3	6		
			0 - 40	3	0 - 20	6		
		0 - 80	1.5	0 - 40	3			
		QJ63B	0 - 8.5	3	0 - 4.2	6	280 m >280 m*	24/24/5.4
			0 - 40	3	0 - 20	6		
			0 - 80	1.5	0 - 40	3		
Trolleying		DTC55	0→57					55 Nm
Slewing		RTC190	0-0.7 rpm					2x95 Nm
		YMD50	0-0.7 rpm					2x5.5
Travelling		RT	12.5-25 m/min					2x5.2

\* Please consult us

1.1.2. ST5515 B – 8 t

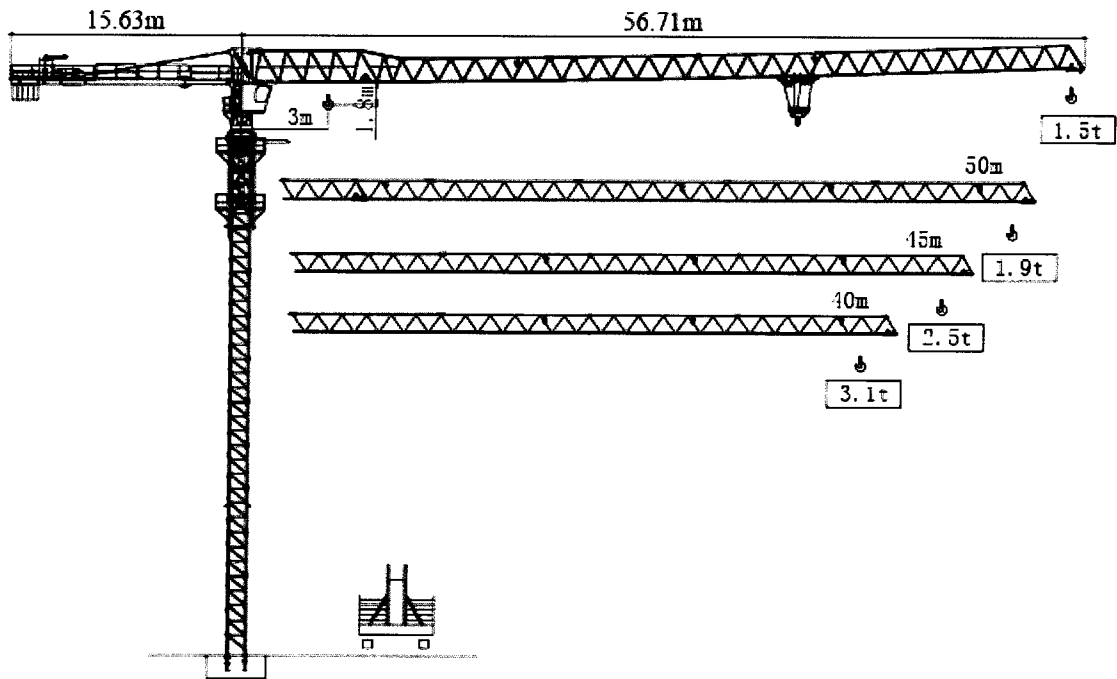


Fig. 1.1.2-1

Table 1.1.2-1

R	Reeving	R(max) m	C(max) t	15	20	25	30	35	40	45	50	55
55	IV	12.5	8.0	6.50	4.64	34.3	2.72	2.17	1.74	1.44	1.22	1.08
	II	24.0	4.0	4.00	4.00	3.83	3.09	2.50	2.12	1.84	1.64	1.50
50	IV	13.2	8.0	6.85	5.01	3.95	3.02	2.41	1.97	1.68	1.51	
	II	26.3	4.0	4.00	4.00	4.00	3.42	3.00	2.56	2.16	1.91	
45	IV	13.6	8.0	7.29	5.56	4.40	3.56	2.93	2.46	2.12		
	II	29.7	4.0	4.00	4.00	4.00	3.96	3.33	2.86	2.52		
40	IV	14.2	8.0	7.64	5.76	4.52	3.78	3.18	2.73			
	II	31.3	4.0	4.00	4.00	4.00	4.00	3.58	3.13			

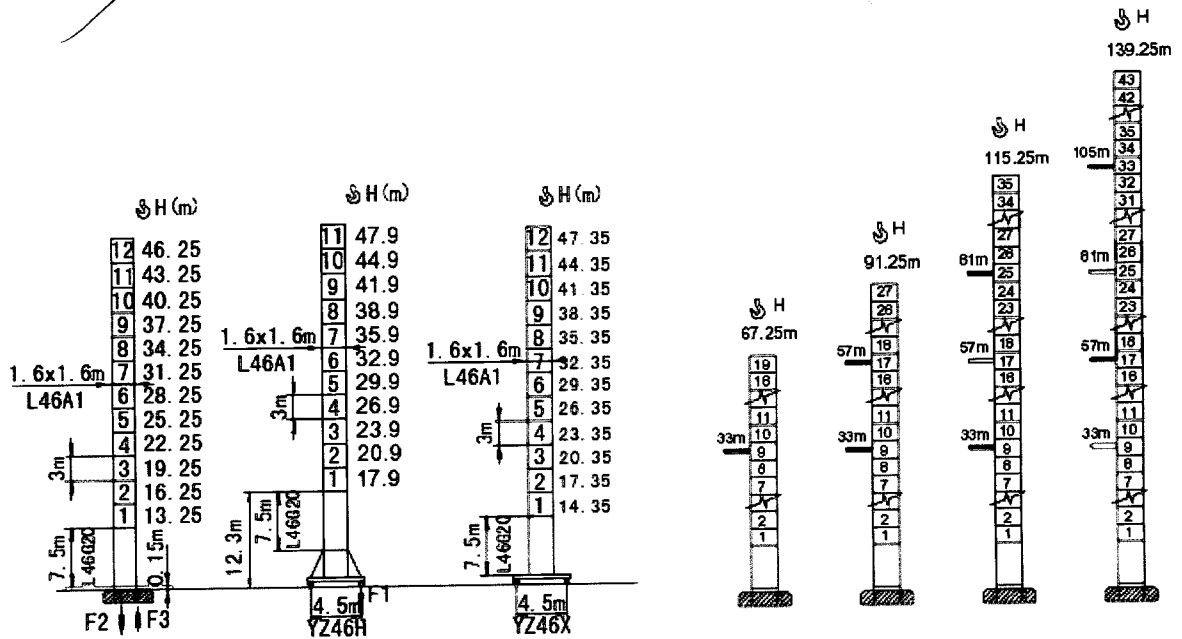


Fig. 1.1.2-2

**Table 1.1.2-2**

<b>Type</b>	<b>Stationary type</b>		<b>Mobile type</b>	
	<b>In service</b>	<b>Out of service</b>	<b>In service</b>	<b>Out of service</b>
<b>F1</b>			70t	89t
<b>F2</b>	98t	118t		
<b>F3</b>	66t	92t		
<b>Net weight</b>	45t		52t	