



# GRU A TORRE

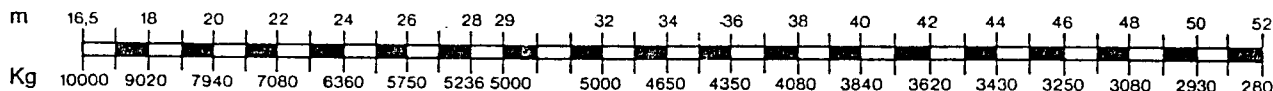
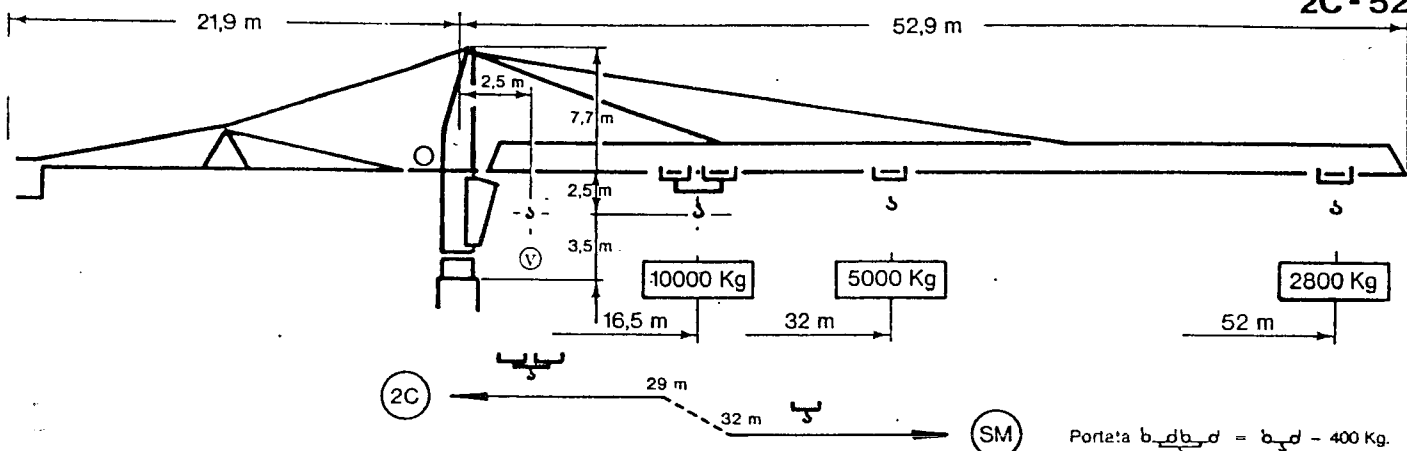
# S 28.52 - B10

Montaggio idraulico  
Cabina panoramica rotante

**S 590 B - 25**

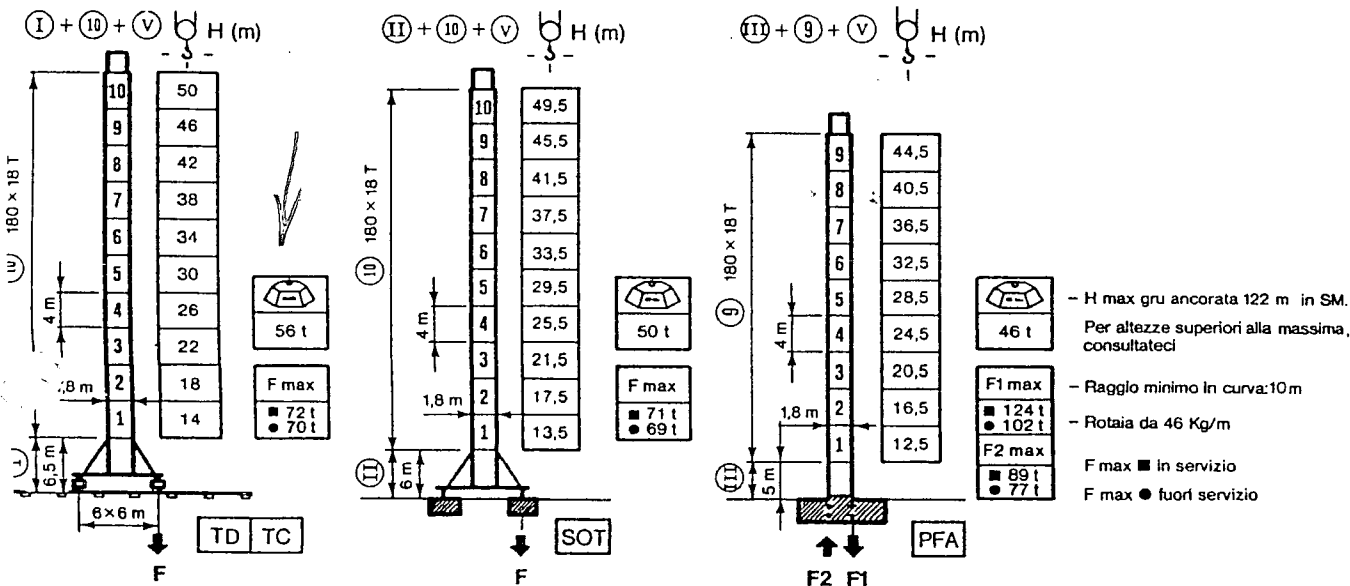
DIN 15018 - H1/B3

2C - 52



Portata  $b_{\text{d}} b_{\text{s}} d = b_{\text{s}} d - 400 \text{ Kg}$ .

altezza H è approssimativa, carrellino in punta al braccio, bozzello nella posizione rappresentata.



|                                    |                               |  | m/min. | Kg    |
|------------------------------------|-------------------------------|--|--------|-------|
| <p>25 SD 50<br/>37 KW (50 CV)</p>  | b <sub>d</sub>                |  | 65     | 2500  |
|                                    |                               |  | 32,5   | 5000  |
|                                    |                               |  | 16     | 5000  |
|                                    | b <sub>d</sub> b <sub>d</sub> |  | 3      | 5000  |
|                                    |                               |  | 32,5   | 5000  |
|                                    |                               |  | 16     | 10000 |
| <p>25 RCS 45<br/>33 KW (45 CV)</p> | b <sub>d</sub>                |  | 0 → 60 | 2500  |
|                                    |                               |  | 0 → 30 | 5000  |
|                                    |                               |  | 0 → 30 | 5000  |
|                                    | b <sub>d</sub> b <sub>d</sub> |  | 0 → 30 | 5000  |
|                                    |                               |  | 0 → 15 | 10000 |
|                                    |                               |  | 0 → 15 | 10000 |

|  |            |                   |                          |
|--|------------|-------------------|--------------------------|
|  | 2 RC 8     | 0 → 0,7 giri/min. | 2 × 4,5 KW<br>(2 × 6 CV) |
|  | DGT 256    | 25 ÷ 50 m/min.    | 3,7/4,5 KW<br>(5/6 CV)   |
|  | DC 256     | 0 → 50 m/min.     |                          |
|  | 2 TD 344 A | 25 m/min.         | 4 × 2,2 KW<br>(4 × 3 CV) |
|  | 2 TC 344 A |                   |                          |

|                |                             |                                      |
|----------------|-----------------------------|--------------------------------------|
| 380 V<br>50 Hz | Potenza elettrica<br>80 KVA | Gruppo elettrogeno<br>(consultateci) |
|----------------|-----------------------------|--------------------------------------|

ENPI n° S 607

con riserva di modifica senza preavviso



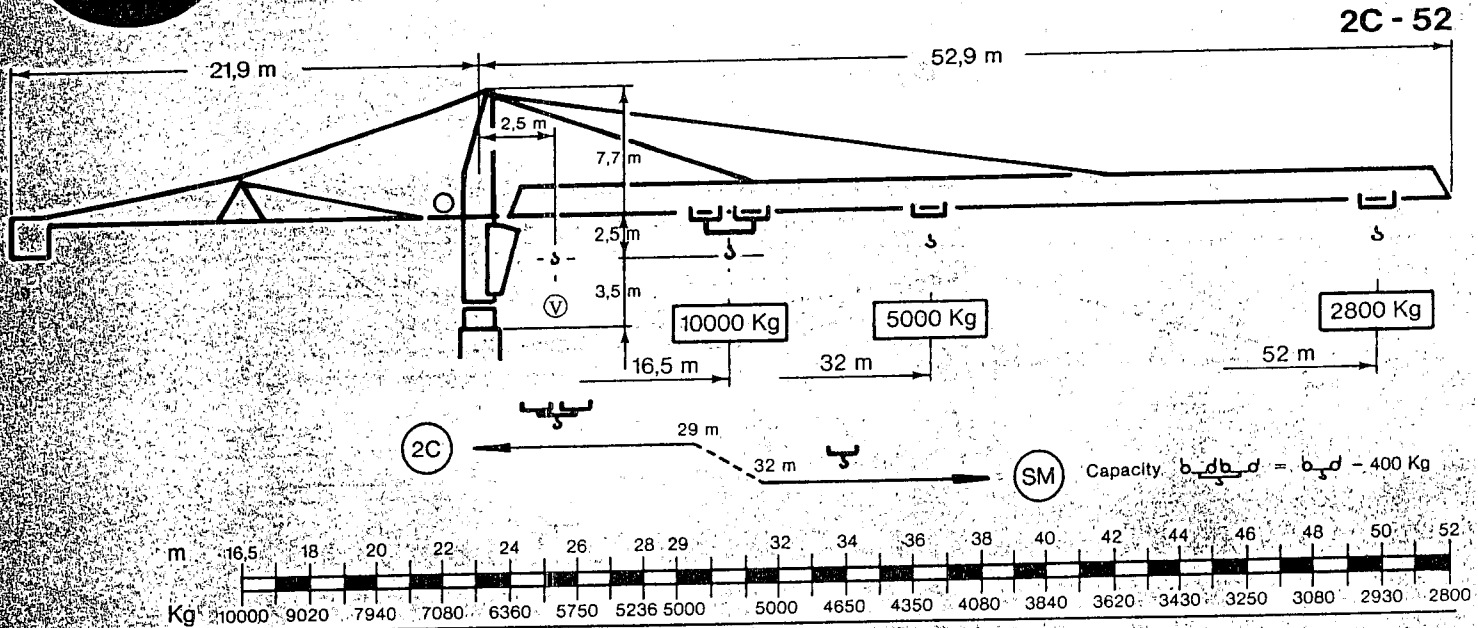
# TOWER CRANE - GRUE A TOUR - TURMDREHKRAN

# S 28.52 - C10

Hydraulic assemblage - Montage hydraulique - Hydraulikmontage  
 Panoramic slewing cabin - Cabine panoramique tournante - Drehende Panoramakabine

## S 590 C - 25

DIN 15018 - H1/B3



$(I) + (2) + (10) + (V) \frac{b \cdot d}{4} H (m)$     
  $(II) + (2) + (10) + (V) \frac{b \cdot d}{4} H (m)$     
  $(III) + (2) + (9) + (V) \frac{b \cdot d}{4} H (m)$

- Max height (anchored crane) 122 m SM
- For superior height consult us
- Min internal radius for curve travelling 10 m
- Type of rail 50 Kg/m
- Hauteur maxi (grue ancrée) 122 m SM
- Pour hauteur supérieur nous consulter
- Rayon intérieur min. pour voie curve 10 m
- Type of rail 50 Kg/m
- Max Hoehc (verankerte Kran) 122 m SM
- Fuer hoehere Hakenhoehe bei uns rueckfragen
- Min Innenradius fuer Kurvenlahrwerk 10m
- Schienenprofil 50 Kg/m
- In operation - En Service - In Betrieb
- Out of operation - Hors service - Ausser Betrieb

|                           | m/min. | Kg        |           |
|---------------------------|--------|-----------|-----------|
| <p>25 SD 50<br/>37 kW</p> |        | 65 2500   |           |
|                           |        | 32,5 5000 |           |
|                           |        | 16 5000   |           |
|                           |        | 3 5000    |           |
|                           |        |           | 32,5 5000 |
|                           |        |           | 16 10000  |
|                           |        |           | 8 10000   |
|                           |        |           | 1,5 10000 |

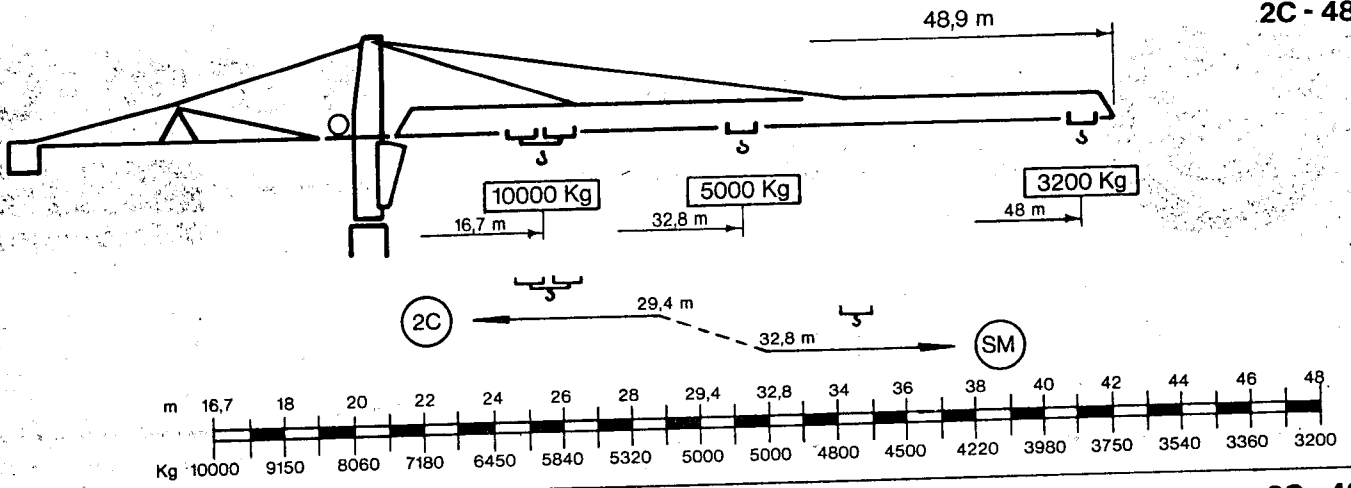
|                  |  |             |              |
|------------------|--|-------------|--------------|
| <p>25 RCS 45</p> |  | 0 → 60 2500 |              |
|                  |  | 0 → 30 5000 |              |
|                  |  |             | 0 → 30 5000  |
|                  |  |             | 0 → 15 10000 |

|  |            |                         |            |
|--|------------|-------------------------|------------|
|  | 2 RC 6     | 0 → 0,7 r.p.m. - U/min. | 2 × 4,5 kW |
|  | DGT 256    | 25 → 50 m/min.          | 3,7/4,5 kW |
|  | DC 256     | 0 → 50 m/min.           |            |
|  | 2 TD 344 A | 25 m/min.               | 4 × 2,2 kW |
|  | 2 TC 344 A |                         |            |

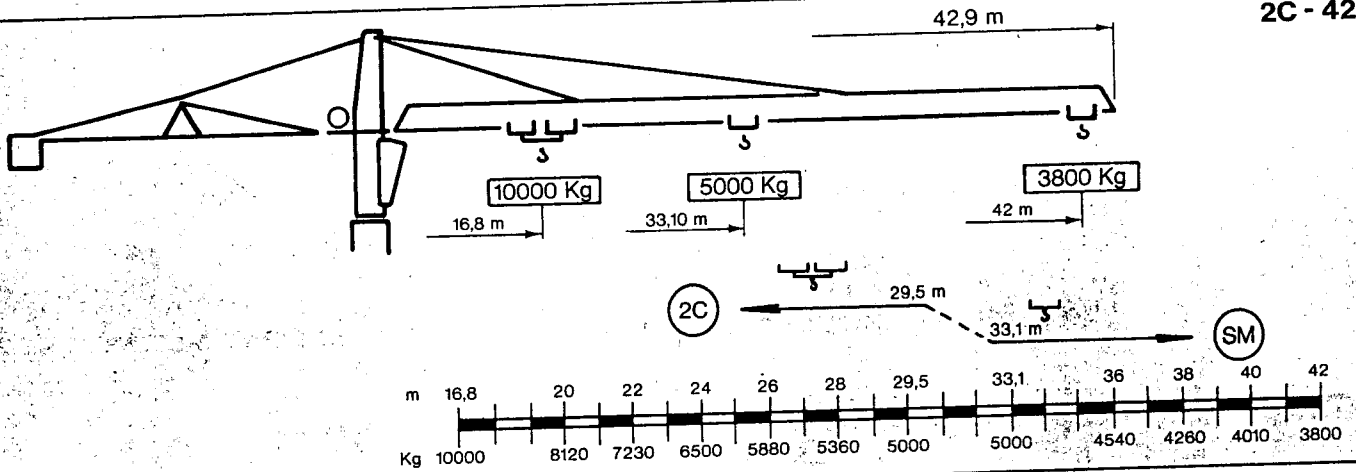
|                |   |  |
|----------------|---|--|
| 380 V<br>50 Hz | Power supply 80 KVA<br>Puissance nécessaire 80 KVA<br>Kraftbedarf: 80 KVA | Generator unit consult us<br>Groupe électrogène: nous consulter<br>Stromaggregat bei uns rueckfragen |
|----------------|---|--|

Subject to modification - modifications réservées - Aenderungen vorbehalten

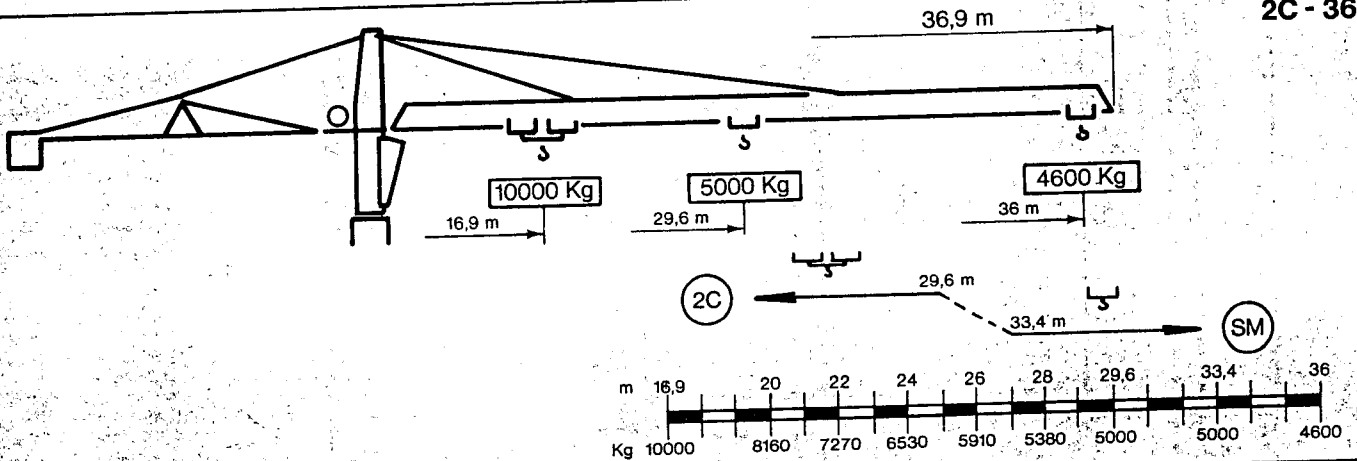
2C - 48



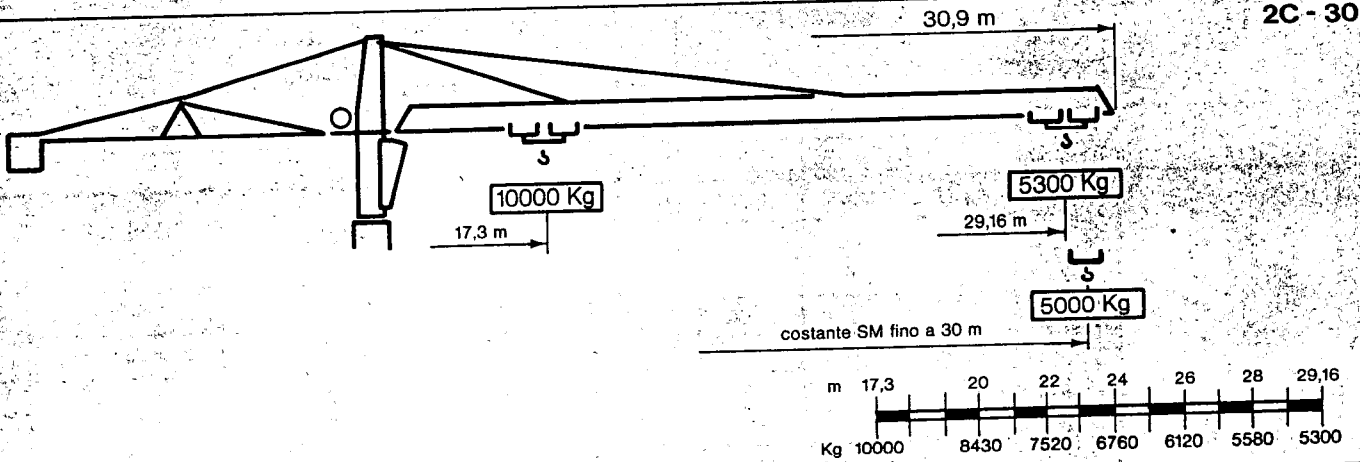
2C - 42



2C - 36



2C - 30



**simma**

SIMMA s.p.a. - 20012 CUGGIONO - MILANO/ITALIA  
 VIA IV NOVEMBRE - TEL. (02) 97.42.51/5 - 71/5 - TELEX 330156

