

				m/min	t	Dr-PS hp	kW
Lift age Heben Elevacion	Trottil standard Standard hoist winch Mecanismo standard	55 RCS 30C	●	0-34	6	365m >365m	55
				0-68	3		
Trottil optional Wahlweises Hubwerk Optional winch Mecanismo opcional	●	33 PC 30C	●	0-34	6	408m >408m	33
				3.5	6		
Distribution : Kesselkran Trolleying : Distribucion	-	6 DPC 4	7.5 30 60	19	6		4.4
				9.5	12		
Orientation : Schwenken Slewing : Orientacion	●	OMD 55	0 - 0.7 v/min U/min	1.75	12		2 x 5.9
				38	3		
Translation Kranfahnen Travelling Traslacion	●	VB 682 R ≥ 12m	RT 442 A1 2V RC 646 ARC H ≤ 43.5m	15 - 30		4 x 5 4 x 3.7	4 x 5 4 x 5
				10 - 50			
Retrau - Neutron - Mains supply - Red							380 V - 50 HZ
Puissance électrique nécessaire - Anschlusswert - Necessary electric power - Potencia eléctrica necesaria							RCS : 70 kVA
Groupe electrogène - Stromgenerator - Generator set - Grupo electrogeno							

Nous consulter - Auf Anfrage - Consult us - Consultarnos

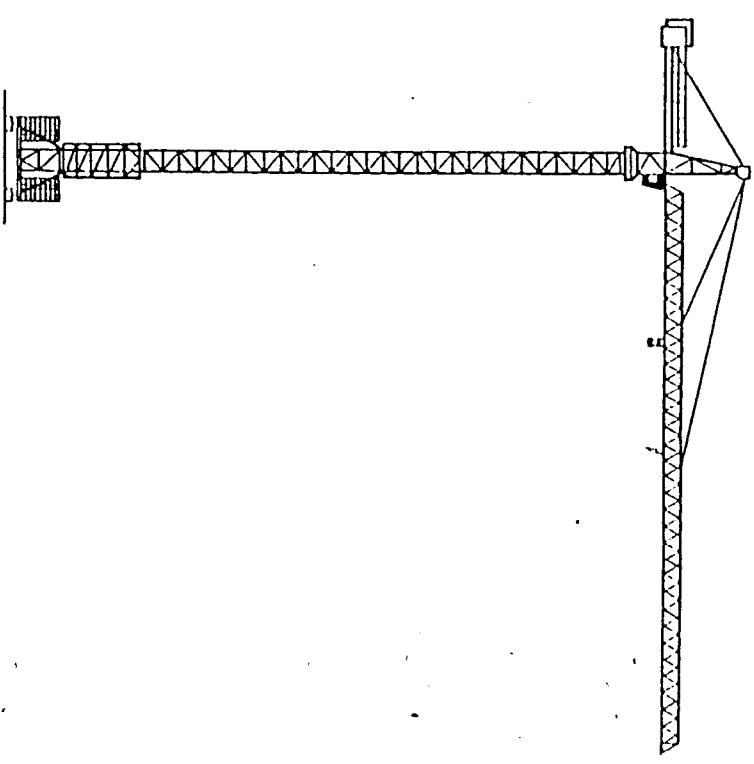
POTAIN

18, rue de Charbonnières B.P. 179 - F 69132 ECULLY Cedex
Té. (71) 6331131 - Tél. 330 179 F
POTAIN GmbH - O 6022 BAD REULEN WALLDORF
Telefonat. 7847 - Fernruf 430 - Tel. 06105 7042 - Telex 4180746
POTAIN S.p.A. - ON 5132 UDINESE WILDFOG

NF 52081 - 82

Printed in France

Modificaciones reservadas Änderungen vorbehalten Subject to modification Modificaciones reservadas



TOPKIT H30 / 30C

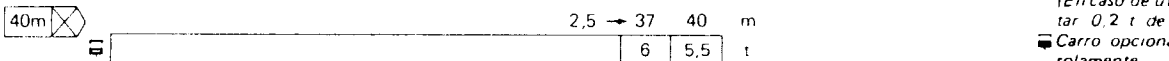
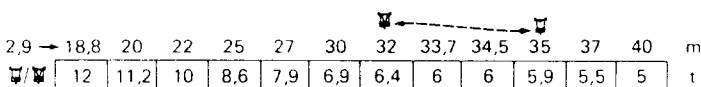
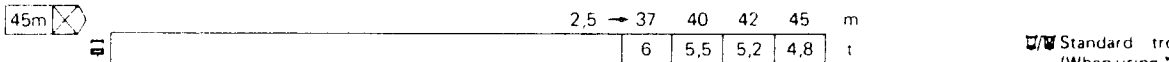
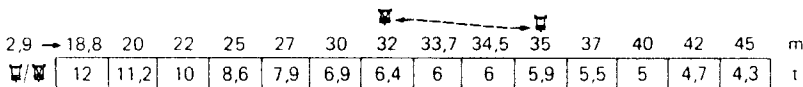
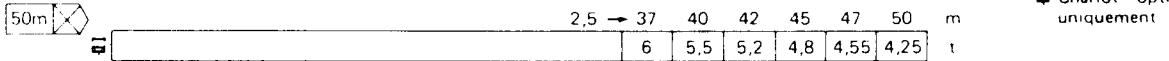
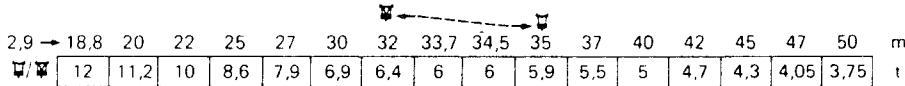
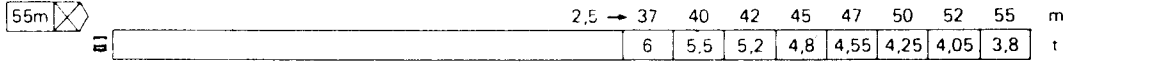
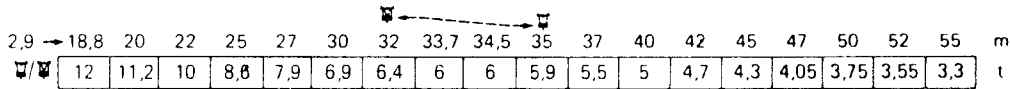
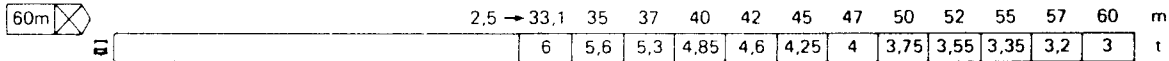
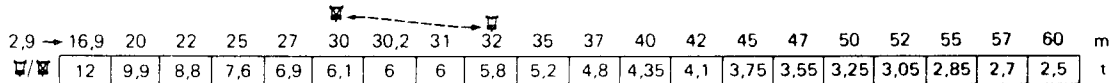
POTAIN

108

Courbes de charges Lastkurven Load diagrams Curvas de cargas



Fleche Ausleger Jib Flecha



☐☐ Chariot standard 2/4 brins (En cas d'utilisation ☐☐ déduire 0.2 t aux charges ☐☐)
☐☐ Chariot optionnel 2 brins uniquement

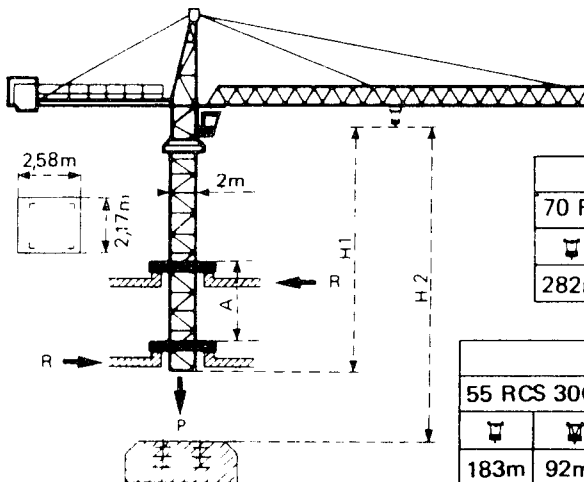
☐☐ Standardlaufkatze 2/4 Stränge (Bei Einsatz von ☐☐ ist 0.2 t der Lasten von ☐☐ abzuziehen ☐☐ Laufkatze in Sonderausführung mit nur 2 Strängen

☐☐ Standard trolley 2/4 fall (When using ☐☐ subtract 0.2 t from the loads ☐☐)
☐☐ Optional trolley 2 fall only

☐☐ Carro standard 2/4 ramales (En caso de utilización ☐☐ quitar 0.2 t de las cargas ☐☐)
☐☐ Carro opcional en 2 ramales solamente

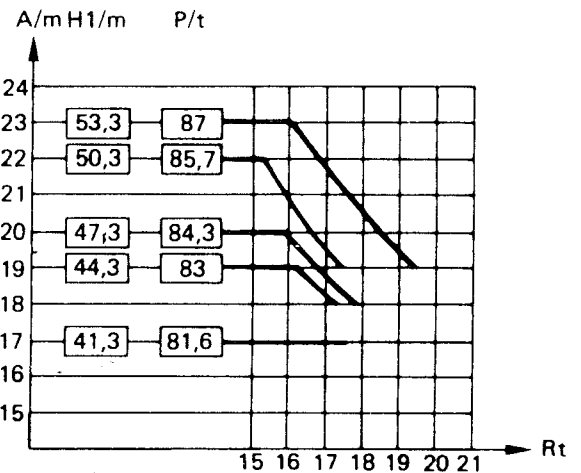
**Télescopage sur dalles - Ketterkrane im Gebäude
Climbing crane - Telescopage gruas trepadoras**

BA65A



H2	
70 RCS 30C	
☐☐	☐☐
282m	141m

H2			
55 RCS 30C		33 PC 30C	
☐☐	☐☐	☐☐	☐☐
183m	92m	204m	102m



A Distance entre cadres A Abstand zwischen den Rahmen
H1 Hauteur grue H1 Kranhöhe
P Poids de la grue P Krangewicht (In service) (In Betrieb)
R Réaction horizontale R Horizontalkräfte

A Distance between collars A Distancia entre marcos
H1 Crane height H1 Altura grúa
P Crane weight P Peso de la grúa (In service) (En servicio)
R Horizontal reaction R Reacción horizontal

● En service ● In Betrieb
■ Hors service ■ Ausser Betrieb
☐☐ A vide sans lest avec fleche et hauteur maximum. ☐☐ Ohne Last und Ballast mit Maximalausleger und Maximalhöhe.

● In service ● En servicio
■ Out of service ■ Fuera de servicio
☐☐ Without load and ballast with longest jib and maximum height. ☐☐ Sin cargas, sin lastre con flecha y altura máxima.