

- ▲ Flèche Ausleger ≥ 55m
- ▲ Jib Flecha ≥ 55m

Mât Mast Mast Mástil

∅ 1,6m x 1,6m

Mât Mast Mast Mástil

∅ 2m x 2m

PA 481

SB 481

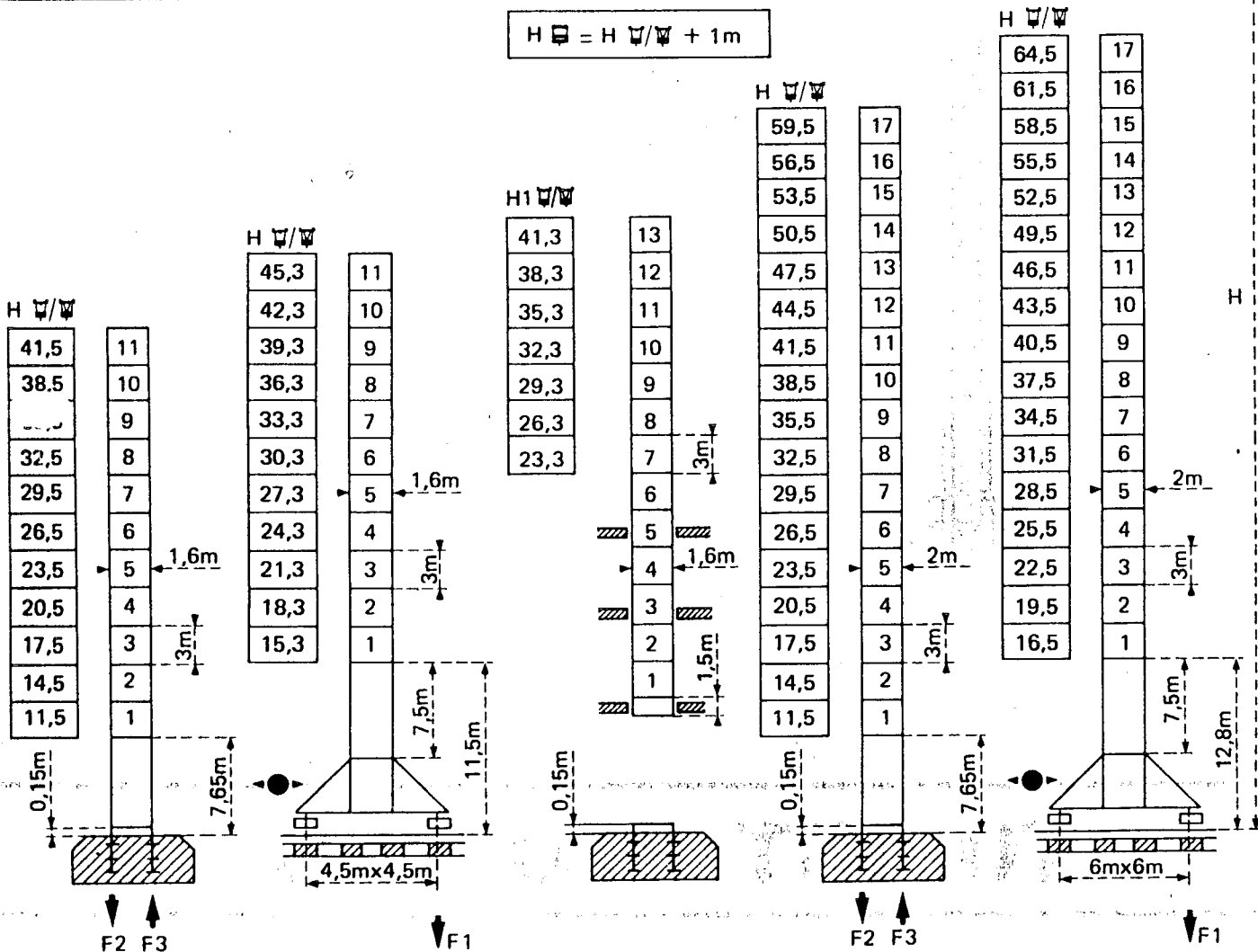
BA 45A*

PA 663

VB 663

Flèche Ausleger Jib Flecha ≤ 55m

$$H_{\square} = H_{\square/\square} + 1m$$



F = Réactions Eckdrücke Reactions Reacciones

F2	● 108t	■ 87t
F3	● 70t	■ 54t
	47t	

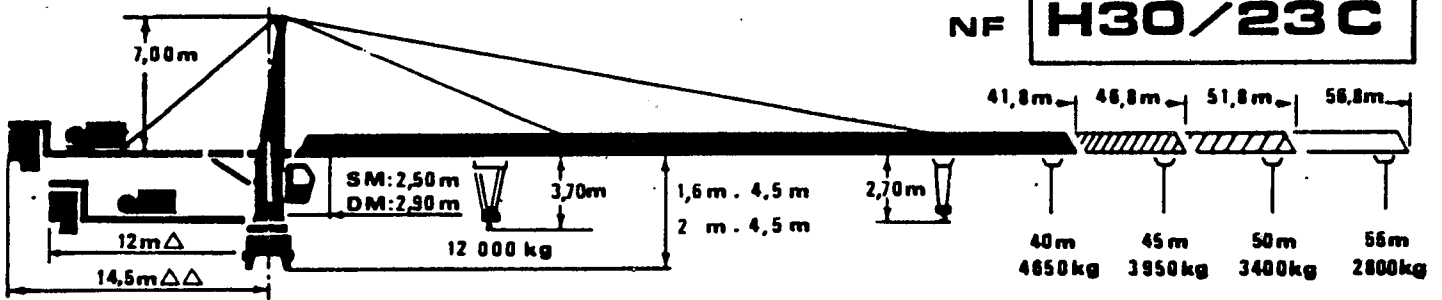
F1	● 71t	■ 65t
	55t	

Voir ci-contre *
 Siehe nebenstehend
 See opposite
 Ver página opuesta

F2	● 121t	■ 162t
F3	● 72t	■ 120t
	85t	

F1	● 89t	■ 110t
	98t	

NF **H30/23C**



La hauteur sous crochet est théorique, elle est obtenue flèche horizontale, avec garde de fin de course de 0,70 m entre le moufle et le chariot
 Hook height theoretical, obtained : jib horizontal, limit switch protection distance of 0,70 m between pulley block and trolley.

12000	10200	8400	7100	6000	U													Kg-daN
14,8	17	20	23	26,3		26,9	30	32	35	37	40	42	45	47	50	52	55	m
					U	6000	5300	4850	4300	4000	3800	3400	3100	2900	2650	2500	2300	Kg-daN
					U	28,8	30	32	35	37	40	42	45	47	50	52	55	m
					U	6000	5700	5300	4800	4500	4100	3900	3800	3400	3150	3000	2800	Kg-daN

55m

12000	10900	9000	7800	6900	6000	U												Kg-daN
16,7	17	20	23	25	28		28,6	32	35	37	40	42	45	47	50			m
					U	6000	5200	4650	4350	3950	3700	3350	3150	2900			Kg-daN	
					U	30,6	32	35	37	40	42	45	47	50			m	
					U	6000	5700	5200	4850	4400	4200	3850	3650	3400			Kg-daN	

50m

12000	11200	9200	7800	7100	6000	U												Kg-daN
16	17	20	23	25	28,5		29,2	32	35	37	40	42	45					m
					U	6000	5400	4800	4450	4050	3800	3450					Kg-daN	
					U	31,3	32	35	37	40	42	45					m	
					U	6000	5800	5300	4950	4550	4300	3950					Kg-daN	

45m

12000	11400	9500	8000	7200	6000	U												Kg-daN
16,3	17	20	23	25	29,1		29,8	32	35	37	40							m
					U	6000	5500	4900	4600	4150							Kg-daN	
					U	32	35	37	40								m	
					U	6000	5400	5100	4650								Kg-daN	

40m

△ FLECHE-JIB ≤ 50m
 △△ FLECHE-JIB 55m

Pour toute autre version de flèche, nous consulter
 For any other jib version, please consult us

* nous consulter
 contact us

			m/mn	m/s	kg daN	Capacité Maxi Capacity Maxi
① Treuil - Winch 55 RCS 30 ch - 40.5 KW 55 hp			68	1.13	3000	365 m
			34	0.58	6000	
			34	0.58	8000	* >365 m
			17	0.28	12000	
② Treuil - Winch 33 PC 30 ch - 24 KW 33 hp			38	0.63	3000	408 m
			19	0.32	6000	
			3.5	0.05	8000	
			19	0.32	8000	* >408 m
			9.5	0.16	12000	
			1.75	0.025	12000	

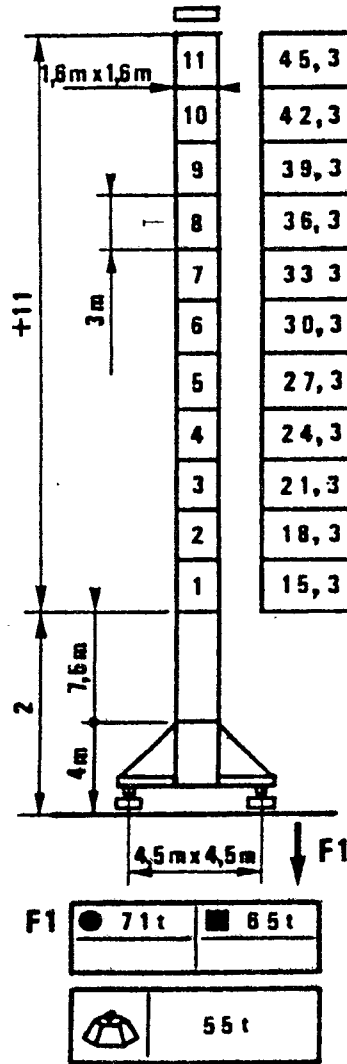
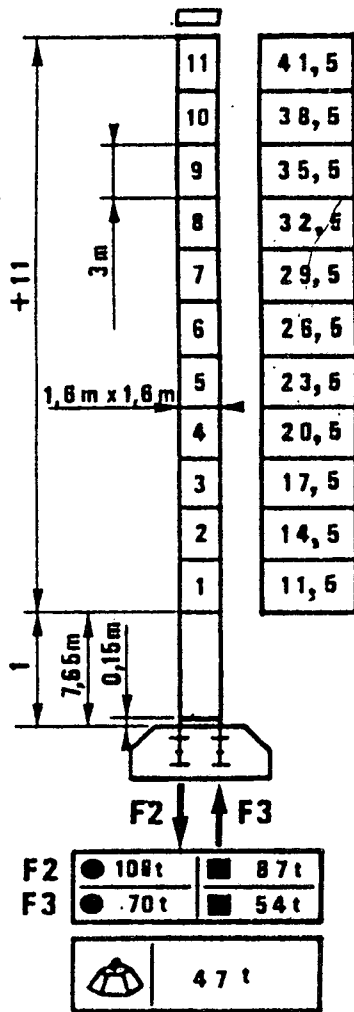
	OMD 55 0 →	0.74 tr/mn r p m	8 ch - hp 2x 5.9 KW
	6 DPC 4	7.5 - 30 - 60 m/mn - m/min 0.12 - 0.5 - 1 m/s	3 - 6 ch - hp 2.2 - 4.4 KW
	380V.50Hz	Réseau Mains ① 80 KVA ② 80 KVA * 60Hz	Groupe électrogène Générateur unit *

PA 481

SB 481

1+11+1

2+11+1



- En service - In service
- Hors service - Out of service
- A vide sans lest avec flèche et hauteur maxi
Without load, without ballast with maximum jib and height

1 Standard

- Z Option translation intensive
- Z Option for heavy duty travelling

1A

1B

Translation
Traslacion
Travelling
Fahrwerk
FRANCE
FRANCIA
FRANCE
FRANKREICH

Translation tout autre pays
Traslacion para cualquier otro pais
Travelling for any other country
Fahrwerk für alle anderen länder

①	A	RT324C2 2V	12,5 - 25 m / mn	2 x 3,5 - 7 ch
	B	RT324 C1 2V	0,21 - 0,42 m / s	2x2,8-5,2KW
②			10 - 50 m / mn	4 x 6,8 ch-hp
	RC 448 ARC		0,16 - 0,83 m / s	4 x 5 KW
H ≤ 2+7+1				

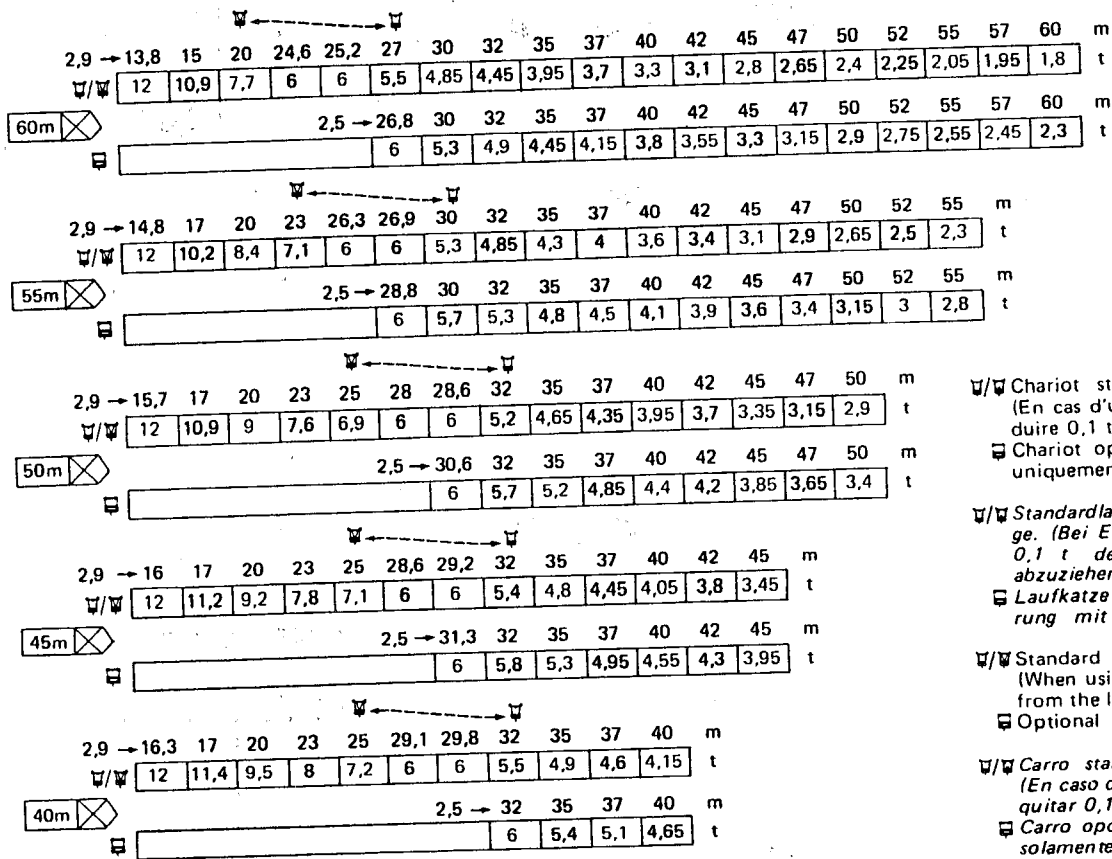
POTAIN

18, rue de Charbonnières - B.P. 173 - F69130 ECULLY
Tel (7) 833.81.81 - Telex 330 179

Modifications réservées
Subject to modification

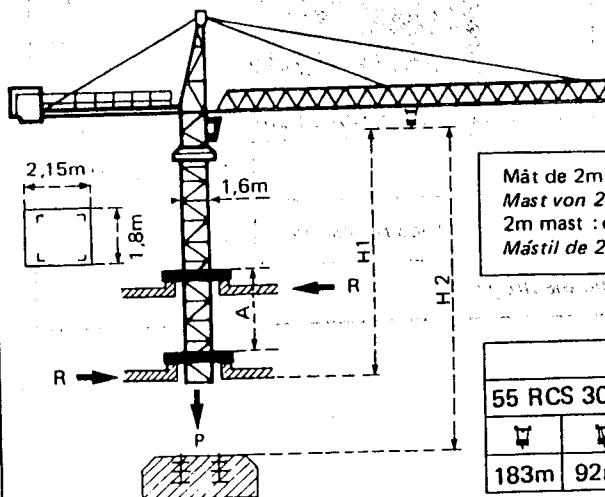
2A.4.005.57

Courbes de charges Lastkurven Load diagrams Curvas de cargas



Chariot standard 2/4 brins (En cas d'utilisation déduire 0,1 t aux charges).
 Chariot optionnel 2 brins uniquement.
 Standardlaufkatze 2/4 Stränge. (Bei Einsatz von abziehen 0,1 t der Lasten von abziehen).
 Laufkatze in Sonderausführung mit nur 2 Strängen.
 Standard trolley 2/4 fall (When using subtract 0.1t from the loads).
 Optional trolley fall only.
 Carro standard 2/4 ramales (En caso de utilización quitar 0,1 t de las cargas).
 Carro opcional en 2 ramales solamente.

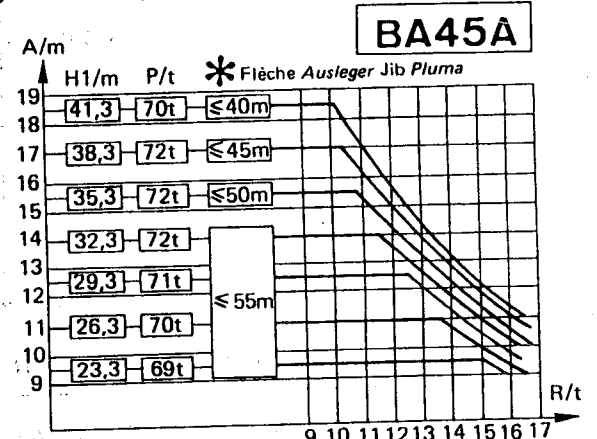
Télescopage sur dalles - Ketterkrane im Gebäude
 Climbing crane - Telecopage gruas trepadoras



Mât de 2m : nous consulter
 Mast von 2m : Auf Anfrage
 2m mast : consult us
 Mástil de 2m : consultarnos






















H2	
55 RCS 30C	33 PC 30C
183m	92m
204m	102m

A Distance entre cadres / Abstand zwischen den Rahmen / Distance between collars
 H1 Hauteur grue / Kranhöhe / Crane height
 P Poids de la grue (En service) / Krangewicht (In Betrieb) / Crane weight (In service)
 R Réaction horizontale / Horizontalkräfte / Horizontal reaction



* Contre-flèche 14,5m impérative pour toute version en BA45A
 Eine Gegenauslegerlänge von 14,5m ist für jede Auslegerausführung bei BA45A unbedingt erforderlich.
 It is essential to have a counter-jib of 14.5 m for all jib versions in case of BA45A.
 Contra flecha 14,5m longitud imperativa para toda versión de flecha en BA45A.

● En service / In Betrieb / In service / En servicio
 ■ Hors service / Ausser Betrieb / Out of service / Fuera de servicio
 (A) A vide sans lest avec flèche et hauteur maximum. / Ohne Last und Ballast mit Maximalausleger und Maximalhöhe. / Without load and ballast with longest jib and maximum height. / Sin cargas, sin lastre con flecha y altura máxima.

					m/min	t		ch-PS hp	kW					
Levage Heben Hoisting Elevación	Treuil standard Standardhubwerk Standard hoist winch Mecanismo standard	55 RCS 30C 			0 → 34	6	365m > 365m *	55	40,5					
					0 → 68	3								
					0 → 17	12								
					0 → 34	6								
			Treuil optionnel Wahlweises Hubwerk Optional winch Mecanismo opcional	33 PC 30C 						3,5	6	408m > 408m *	33	24
										19	6			
		38				3								
					1,75	12								
					9,5	12								
					19	6								
	Distribution - Katzfahren Trolleying - Distribución			6 DPC 4		7,5 30 60			6	4,4				
	Orientation - Schwenken Slewing - Orientación			OMD 55		0 → 0,7 tr/min U/min-rpm			2 x 8	2 x 5,9				
Translation Kranfahren Travelling Traslación	SB 481  R ≥ 10m	RT 324		12,5 - 25			2 x 7	2 x 5,2						
		RC 446 ARC H ≤ 33,3m		10 - 50			4 x 6,8	4 x 5						
		VB 663  R ≥ 13m		RT 443 A1 2V		15 - 30			4 x 5	4 x 3,7				
		RC 646 ARC H ≤ 43,5m		10 - 50			4 x 6,8	4 x 5						
Réseau - Netzstrom - Mains supply - Red								380 V - 50 HZ						
Puissance électrique nécessaire - Anschlusswert - Necessary electric power - Potencia electrica necesaria								RCS : 70 kVA						
Groupe électrogène - Stromaggregat - Generator set - Grupo electrogeno								*						

*Nous consulter - Auf Anfrage - Consult us - Consultarnos

NF E52081 - 82

POTAIN

8, rue de Charbonnières B.P. 173 - F 69132 ECULLY Cedex
él. 78.33.81.81 - Télex 330 179 F

POTAIN GmbH - D 6082 MÖRFELDEN WALLDORF
Iordendstr. 79-87 - Postfach 420 - Tel. 06105 704.0 - Telex 4.185745
POTAIN SUISSE S.A. - CH 5115 MÖRIKEN WILDEGG
él. 64.53.19.91 - Telex 98 1406

TOPKIT H30/23C

Réf. 8513 KNQ 3

Modification vorbehalten Subject modification Modificaciones reservadas

Printed in France