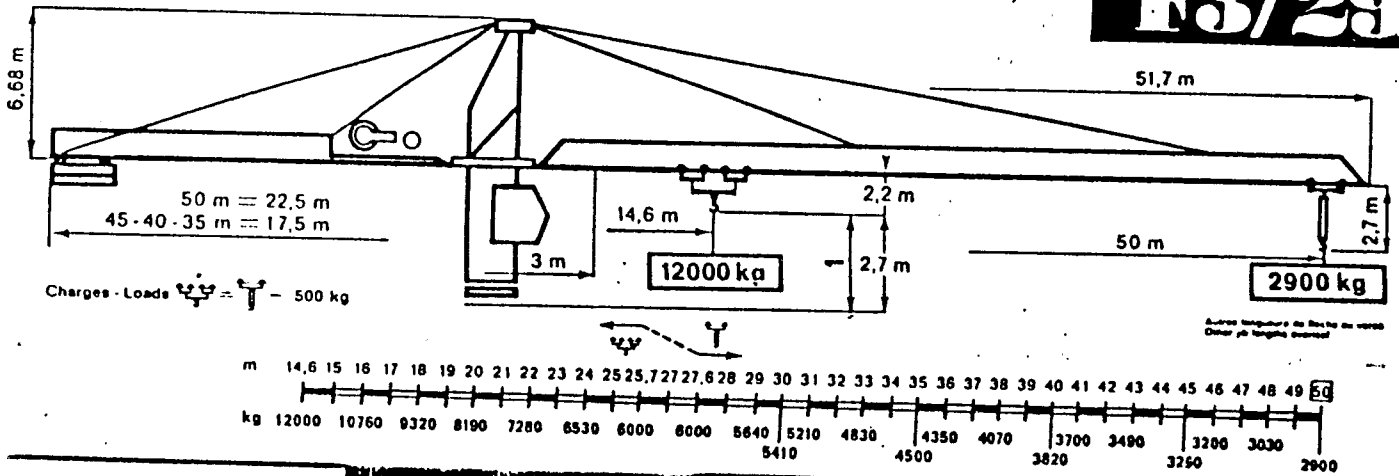


Potain

HLS Ref. No. _____

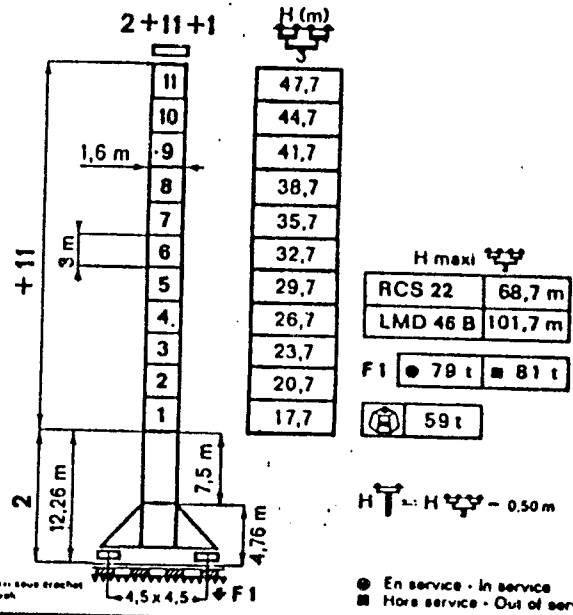
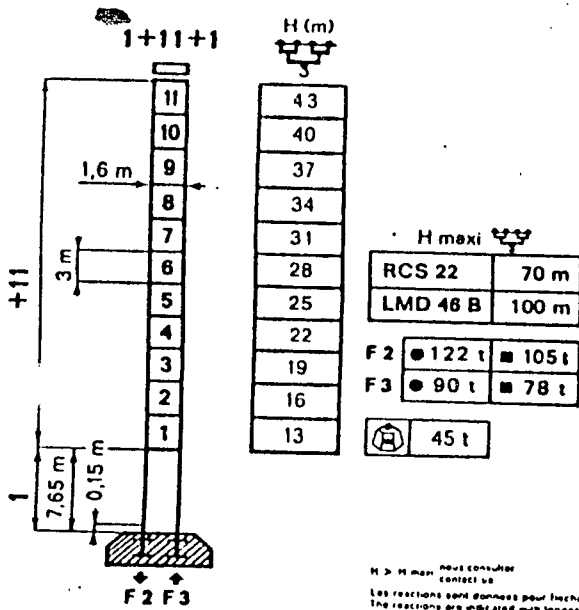
TOPKIT

F3/29



PA459

SA472



H > H maxi: Ψ next consultant contact us
Les réactions sont données pour flèche la plus longue et hauteur maximale sous flèche
The reactions are indicated with longest jib and max height under hook

● En service - In service
■ Hors service - Out of service

		m/mn	kg
① RCS 22 45 ch/hp		0 → 56	3000
		0 → 28	6000
		0 → 28	6000
		0 → 14	12000
② LMD 46 80 ch/hp		0 → 100	3000
		0 → 50	6000
		0 → 200	1500
		0 → 50	6000
		0 → 25	12000
		0 → 100	3000

	OMD 65	0 → 0,8 tr/mn rpm	2x8 ch/hp
	① DMD 30	12t 0 → 60 m/mn	8 ch/hp
	② DMD 35	6t 0 → 100 m/mn 12t 0 → 50 m/mn	8 ch/hp
	RT 425	25 m/mn	2x5 ch/hp
	RTT 545	23 m/mn	4x5 ch/hp
	RCT 546	10-50 m/mn	4x6,5 ch/hp

● Normal - Normal
●● Rapide - Fast 11-2+6+1

380V-50Hz 	Réseau Mains supply 75 KVA ① 120 KVA ②	Groupe électrogène Generator unit nous consulter consult us
---------------	---	--

Modifications réservées

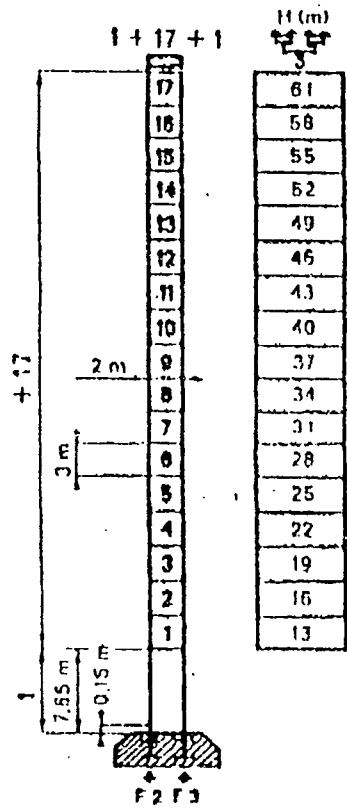
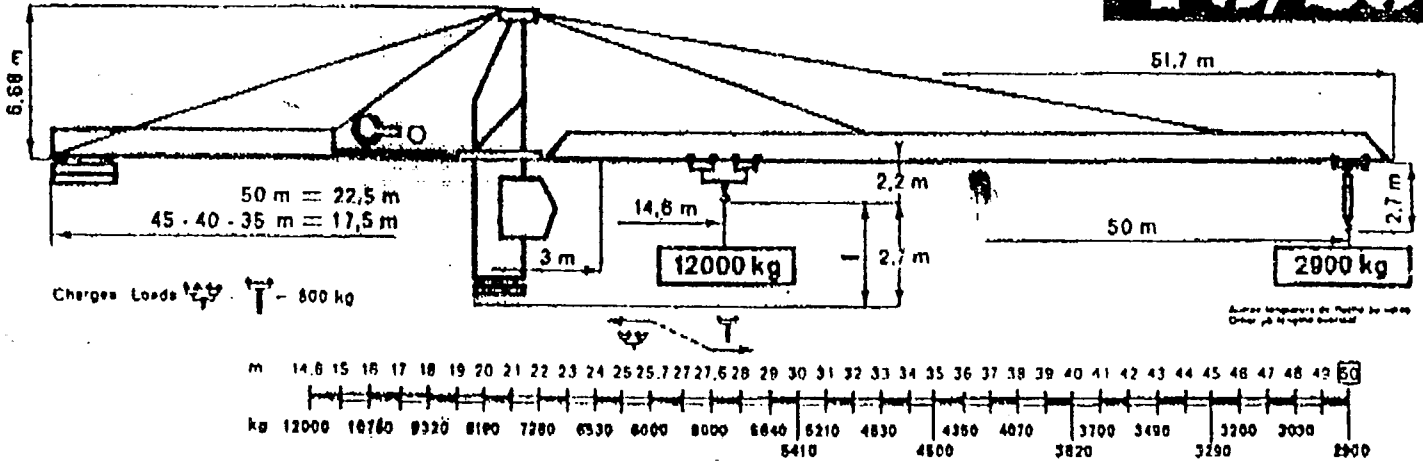
Subject to modification.

P POCAIN

TOPHAT

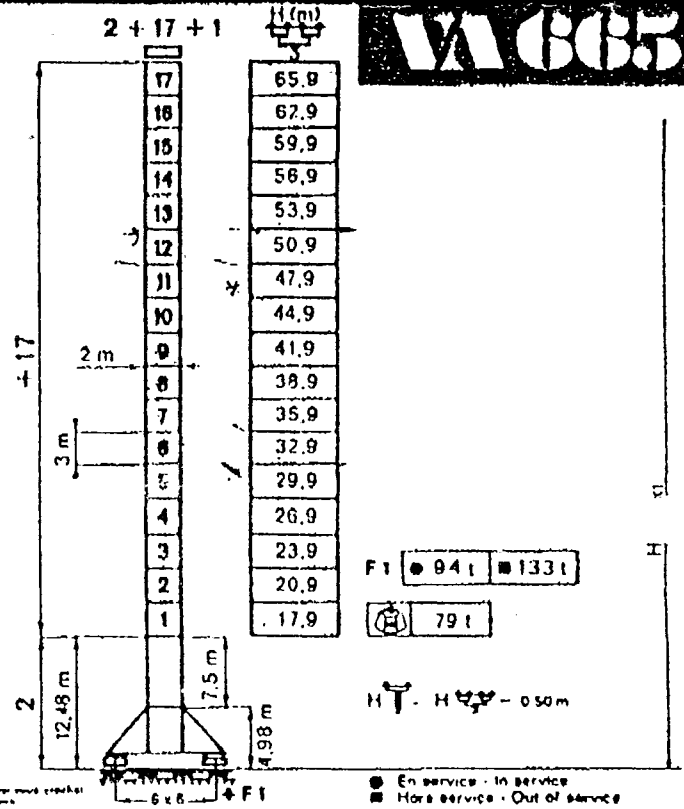
Attn = Danny

FB/29



PAC654

F2	138t	103t
F3	98t	158t
	89t	



VAC655

F1	94t	133t
	79t	

HT - H ∇ - 050m

● En service - In service
■ Hors service - Out of service

	m/mn	kg	Hmaxi ∇
① RCS 22 45 ch/hp	0 → 58	3000	71 m
	0 → 28	6000	
	0 → 28	6000	
	0 → 14	12000	
② LMD 48 80 ch/hp	0 → 100	3000	102 m
	0 → 60	6000	
	0 → 200	1500	
	0 → 50	6000	
	0 → 25	12000	
	0 → 100	3000	

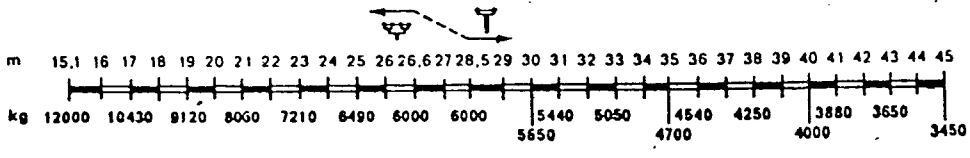
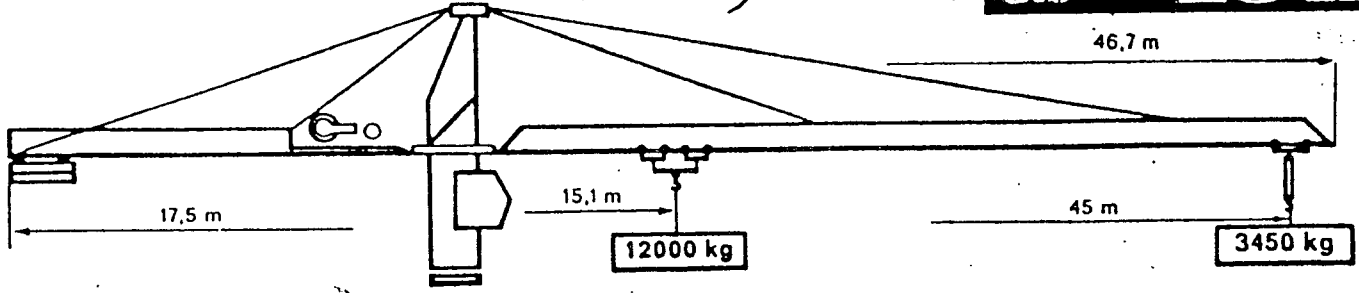
	OMD 55 L 0 → 0.8 tr mn rpm	2x8 ch/hp
	① DMD 30 12t 0 → 60 m mn	8 ch/hp
	② DMD 35 12t 0 → 50 m mn	8 ch/hp
	RT 544 22 m mn	4x4 ch/hp
	RT 645 27 m mn	4x5 ch/hp
	ROJ 46 12-60 m mn	4x8.5 ch/hp

● Normal - Normal
● Rapide - Fast H ∇

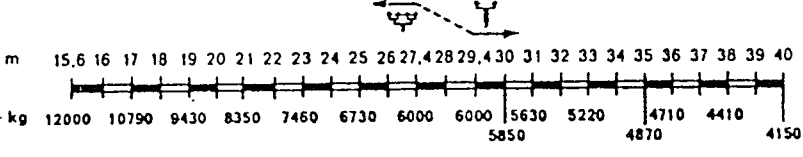
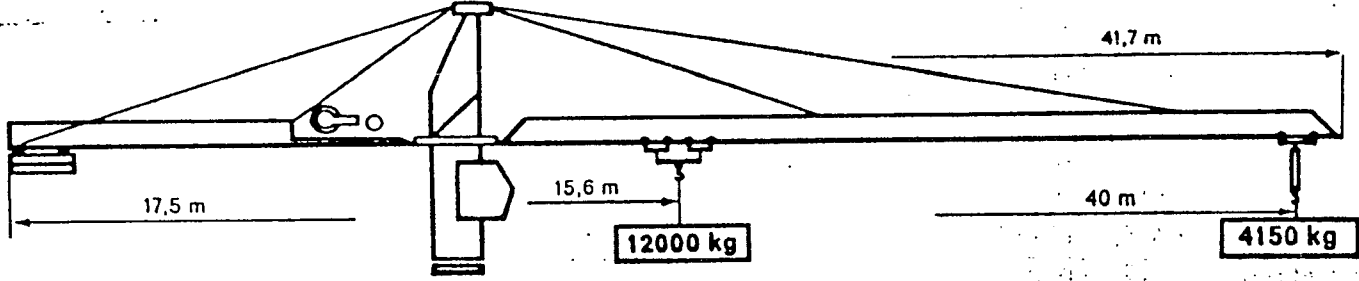
440V 60Hz	Recevoir Mains supply	Circuit électrique Generator and
	① 75 KVA	Nous consulter
	② 120 KVA	Contact us

179 149

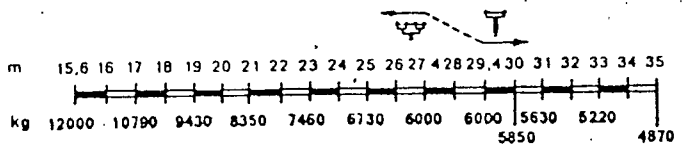
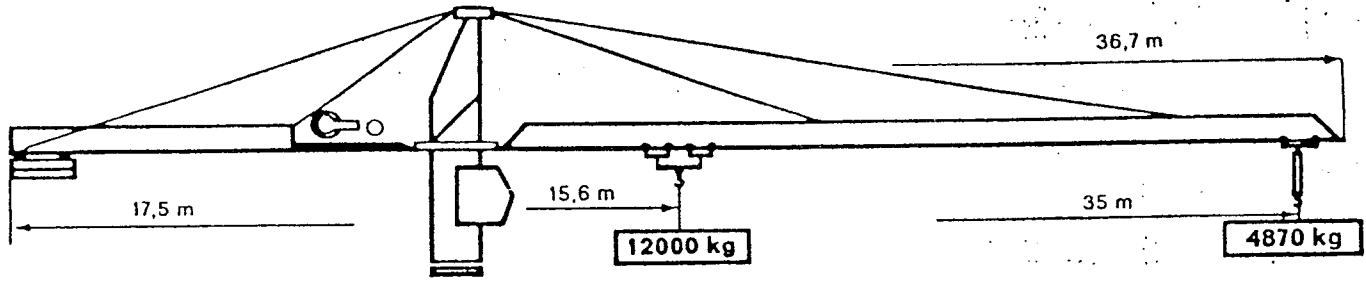
Flèche Jib 45 m



Flèche Jib 40 m



Flèche Jib 35 m



HAWK LIFTING SERVICES LTD

BANK HOUSE, MARKET SQUARE, REEPHAM, NORFOLK, NR10 4JJ, ENGLAND
 Telephone: NORWICH (0603) 870397 TELEX 975479