

| | | | | | | | | | |
|---|--|---------|----------------------|----|-------|-------|---------|-------------|----|
| | | | | | m/min | 1 | | ch-PS hp | kW |
| Lavage Heben Hoisting Elevación | | | | 5 | 3 | 240m | 25 | 19 | |
| | | | | 30 | 3 | | | | |
| | | | | 60 | 1,5 | | | | |
| Distribution - Katzfahren Trolleying - Distribucion | | 3 D2 V4 | 22-44 | | | 4 | 3 | | |
| Orientation - Schwenken Slewing - Orientación | | RCV 40 | 0 → 1,2 U/min-rpm | | | 6 | 4,5 | | |
| Translation - Kranfahren Travelling - Traslación | | RT 224 | 25 | | | 2 x 4 | 2 x 2,9 | | |
| Réseau - Netzstrom - Mains supply - Red | | | | | | | | 380V - 50HZ | |
| Puissance électrique nécessaire - Anschlusswert - Necessary electric power - Potencia eléctrica necesaria | | | | | | | | 35 KVA | |
| Groupe électrogène - Stromaggregat - Generator set - Grupo electrogenero | | | | | | | | * | |

* Nous consulter - Auf Anfrage - Consult us - Consultarnos

Conforme à la directive CEE 84/534 sur le niveau acoustique - Gemäss EMG Richtlinie 84/534 über Schall-Leistungsspiegel
In Compliance with the EEC 84/534 instruction on noise level - Conforme con la directiva CEE 84/534 sobre el nivel acústico

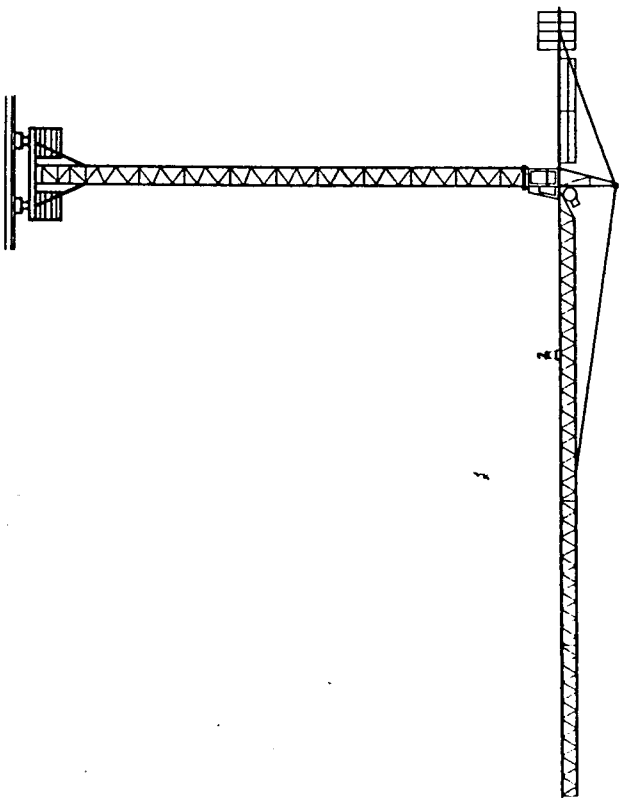
NF E52081 - B2

POTAIN ↻

18, rue de Charbonnières, B.P. 173-F 69132 ECULLY Cedex
Tél. 72.20.20.20 - Téléc. 330 179 - Téléc. Export 375 213.
Fax 72 20 20 00

POTAIN GmbH 6082 MORFELDEN WALLDOORF
Nordendstr. 79-87 - Postfach 420
Tél. 06 105 704.0 - Téléc. 4.1857 45

TOPKIT D15/10A CITY CRANE Réf. 1989.09 KKK 2

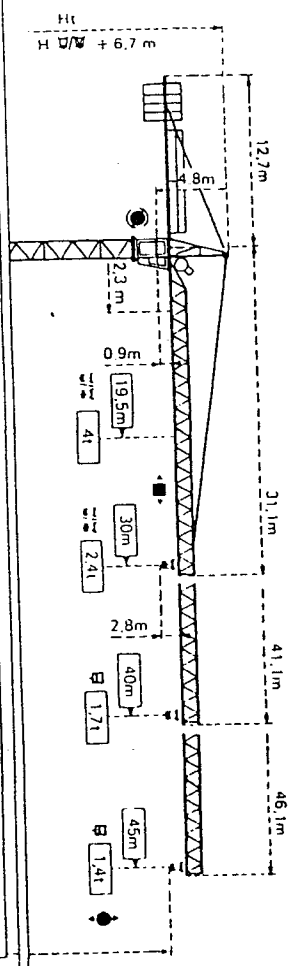


TOPKIT E10/14C

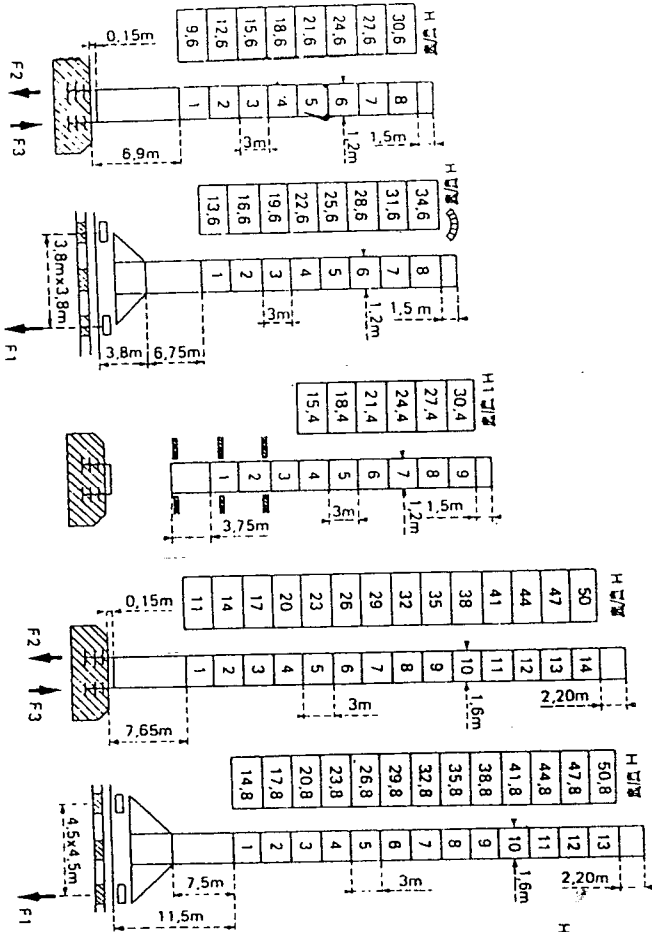
POTAIN ↻

POTAIN TOPKIT E10/14C

Cotes Abmessungen Dimensions Dimensiones



| | | | | |
|--|--------|--|--------|--------|
| PA 252 | LA 252 | BA 25A | PA 470 | SB 469 |
| Mature Mast Mast/Mast ∅ 1,2m x 1,2m | | Mature Mast Mast/Mast ∅ 1,6m x 1,6m | | |
| H = H ₁ + H ₂ - 0,3m | | H = H ₁ + H ₂ + 0,7m | | |



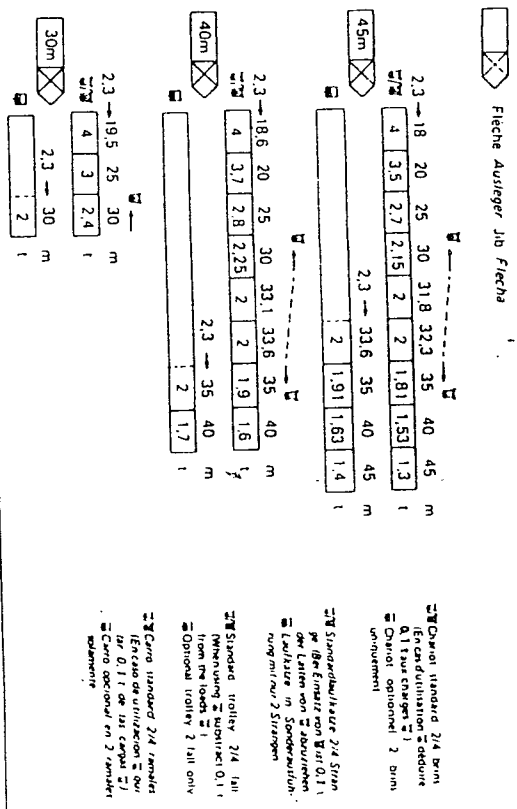
| | | | | | |
|----|-------|-------|----|---------|--------|
| F2 | • 501 | • 591 | F1 | • 351 | • 421 |
| F3 | • 441 | • 451 | F2 | • 511 | • 1081 |
| | 211 | | F3 | • 30,51 | |

Voir ci-contre
Siehe nebenstehend
Ver página opuesta

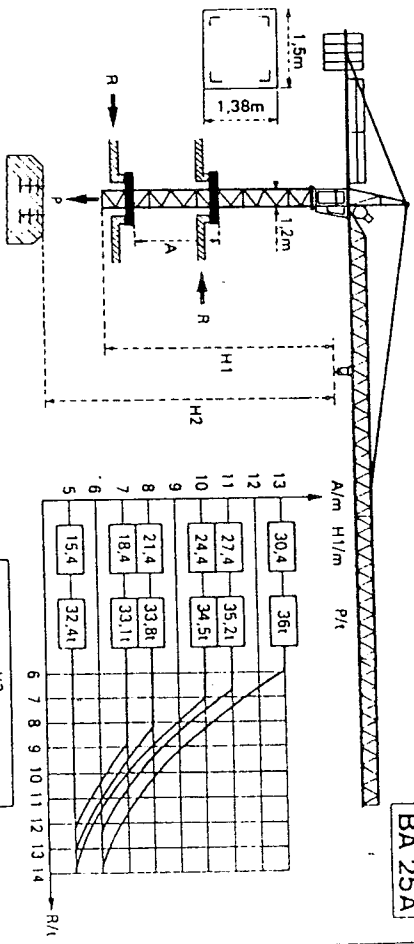
| | | | | | |
|----|-------|--------|----|---------|-------|
| F2 | • 721 | • 1281 | F1 | • 551 | • 841 |
| F3 | • 511 | • 1081 | F2 | • 39,51 | |

F = Réactions Eckdrucke Reactions Reacciones

Curves de charges Lastkurven Load diagrams Curvas de cargas



Telescopage sur dalles - Kletterkrane im Gebilde Climbing crane - Telescopage gruas trepadoras



- En service
 - Hors service
 - A wide sans last avec
 - licche et hauteur maximum
 - Maximalehöhe
 - In Betrieb
 - Ausser Betrieb
 - Ohne Last und Ballast
 - mit Maximallastträger und
 - Maximallhöhe
 - In servicio
 - Fuera de servicio
 - Sin cargas, sin lastre con
 - liccha y altura máxima
 - Maximallhöhe
- POTAIN TOPKIT E10/14C**

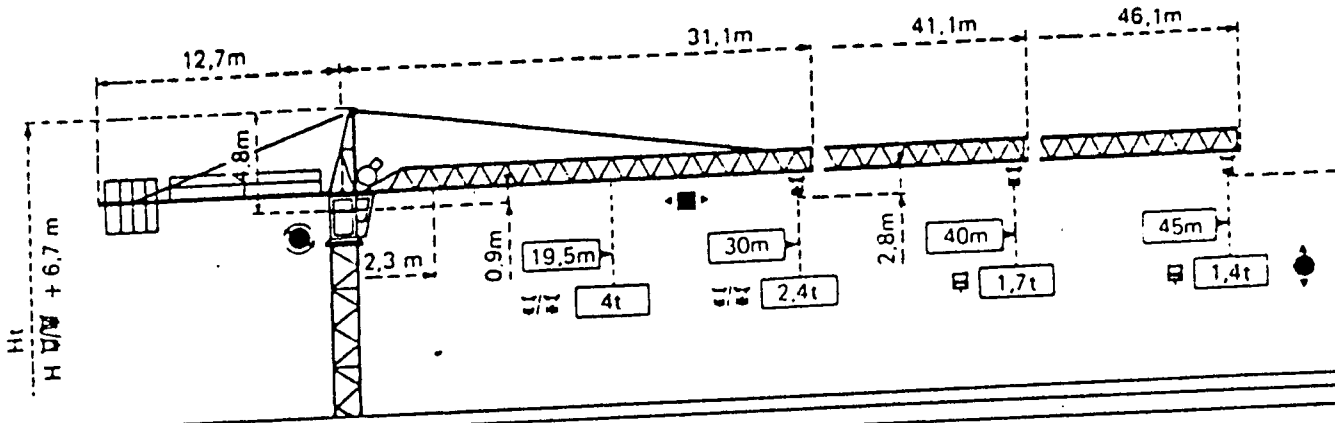
POTAIN TOPKIT E10/14C

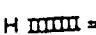
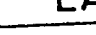
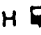

Cotes Abmessungen

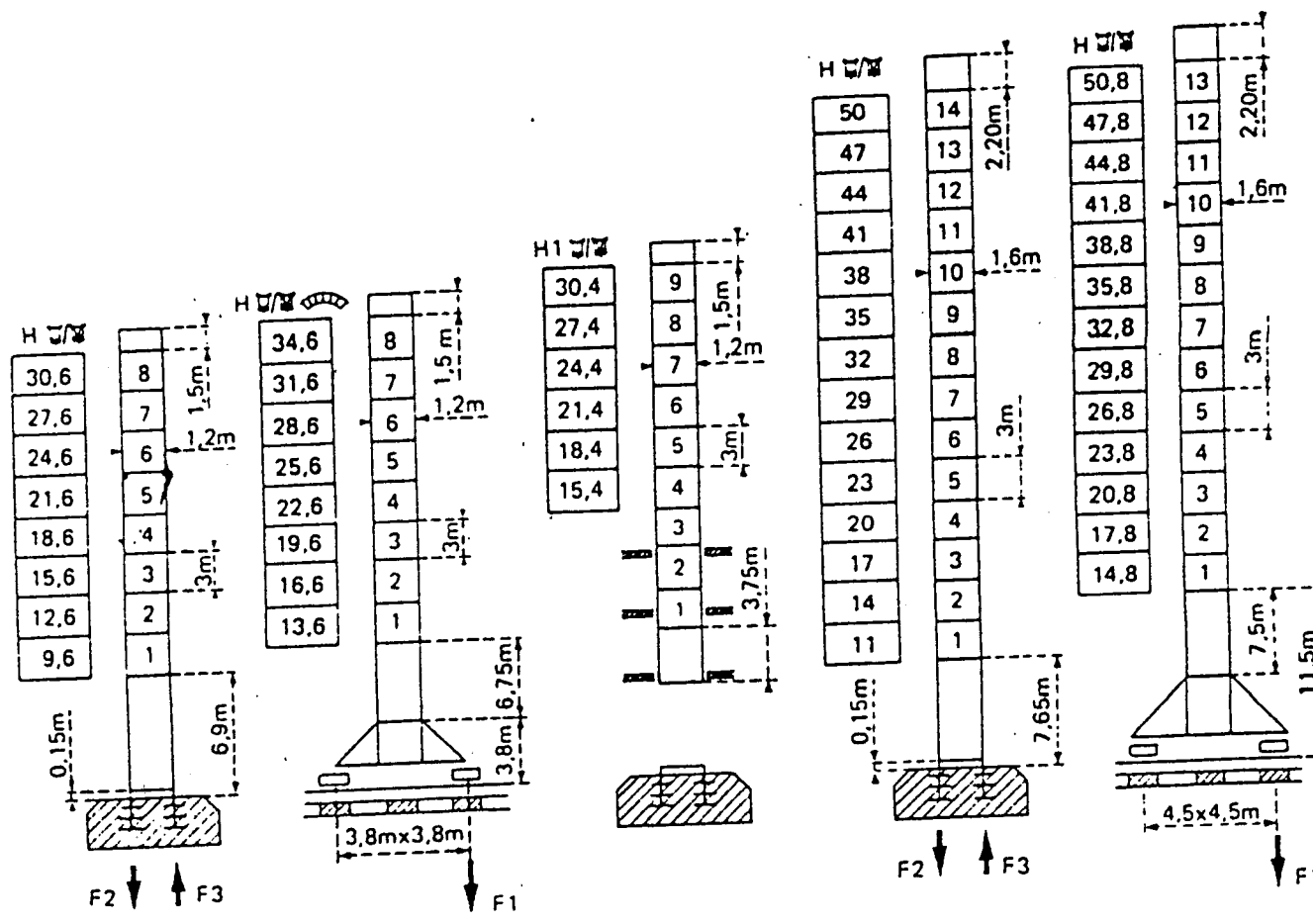
Dimensions

Dimensiones





146



| | | | |
|--|--------|--|--------|
| Mâture Mast Mast Mástil ∅ 1,2m x 1,2m | | Mâture Mast Mast Mástil ∅ 1,6m x 1,6m | |
| PA 252 | LA 252 | BA 25A | PA 470 |
| H  = H  - 0,3m | | H  = H  + 0,7m | |
| | | SB 469 | |



F = Réactions Eckdrucke Reactions Reacciones

| | | | | | | | | |
|---|-------|-------|---|-------|--------|---|-------|-------|
| F2 | ● 60t | ■ 59t | F2 | ● 72t | ■ 128t | F1 | ● 55t | ■ |
| F3 | ● 44t | ■ 45t | F3 | ● 51t | ■ 108t | | | |
|  | | 21t |  | | 25t |  | | 30,5t |
| | | | | | |  | | 39,5t |

Voir ci-contre
Siehe nebenstehend
See opposite
Ver página opuesta

| | 25 PC 10 | 33 PC 10 | m/min | | | | i | 360 m > 364 m | 25 | 18,4 | ch-PS hp | kW |
|---|----------|----------|---|----|----|---|------------------------------------|------------------|-----|------|-------------|----|
| | | | 8 | 45 | 90 | 4 | | | | | | |
| Treuril standard Standardhubwerk Standard hoist winch Mecanismo standard | ● | ● | | | | | 2 | | 25 | 18,4 | | |
| | | | | | | | 2 | | | | | |
| Levage Heben Hoisting Elevación | ● | ● | | | | | 2 | | 25 | 18,4 | | |
| | | | | | | | 2 | | | | | |
| Treuril optional Wahlweises Hubwerk Optional winch Mecanismo opcional | ● | ● | | | | | 1 | 360 m > 364 m | 33 | 24 | | |
| | | | | | | | 4 | | | | | |
| Distribution · Katzfahren Trolleying · Distribución | ■ | ■ | 2 0 2V2 | | | | 14 → 42 | | 2,7 | 2 | | |
| | | | Réseau · Netzstrom · Mains supply · Red | | | | 0.1-0.4/0.8 t/min U/min-h-pm | | 8 | 5,9 | | |
| Orientation · Schwenken Slewing · Orientación | ● | ● | OMD 30 | | | | | | | | | |
| | | | Puissance électrique nécessaire · Anschlusswert · Necessary electric power · Potencia eléctrica necesaria | | | | | | | | | |
| Groupe électrogène · Stromaggregat · Generator set · Grupo electrogeno | | | | | | | | | | | | |
| | | | | | | | | | | | | |
| | | | | | | | | | | | | |

* Nous consulter - Auf Anfrage - Consult us - Consultarnos

NF E52081 - 82 DIN 15018 H1 B3

POTAIN

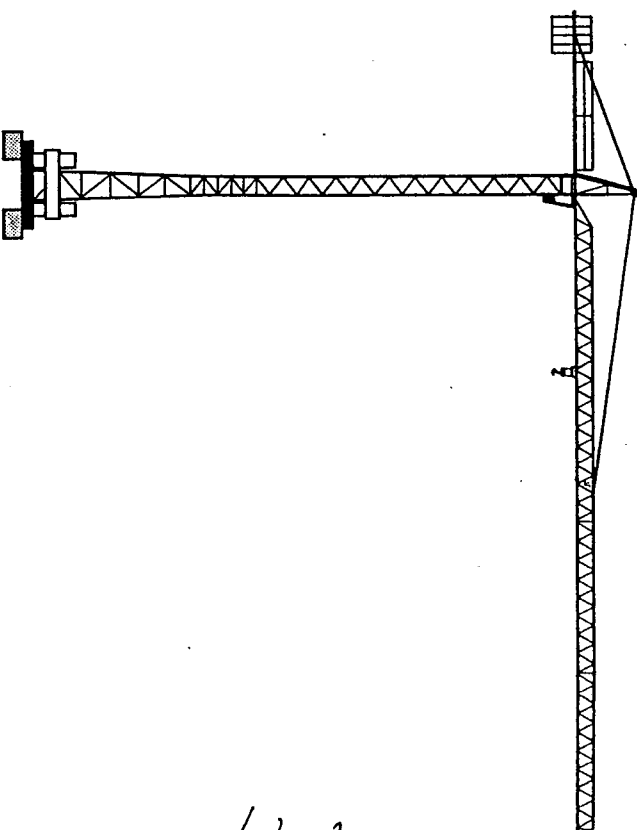
18, rue de Charbonnières BP 173 - F 68132 ECULLY Cedex
Tél. (7) 8332181 - Télex 330 178 F

POTAIN GmbH - D 6922 MÜBBLDEN, WALLDORF
Norddeutsche 79 87 - Postfach 420 - Tel. 06105 704 0 - Télex 4 1857 45
POTAIN SUISSE S.A. - CH 5115 MORIKEN WILDEG

TOPKIT F 10/14C

Printed in France

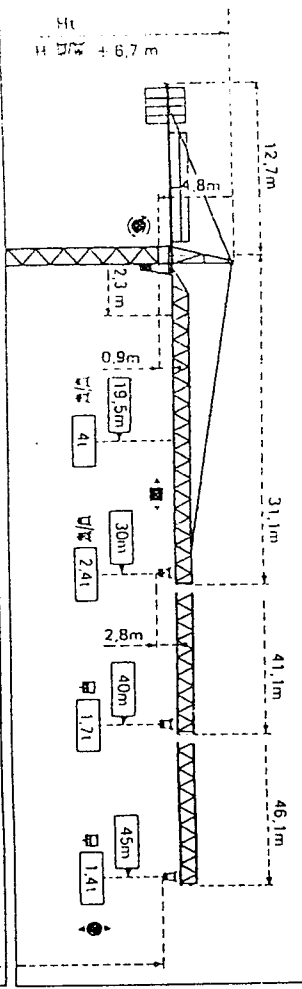
Modifications réservées Änderungen vorbehalten Subject to modification Modificaciones reservadas



15/105

TOPKIT E10/14C CITY CRANE

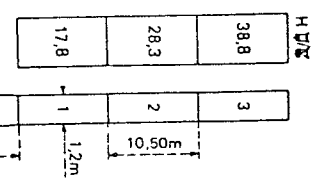
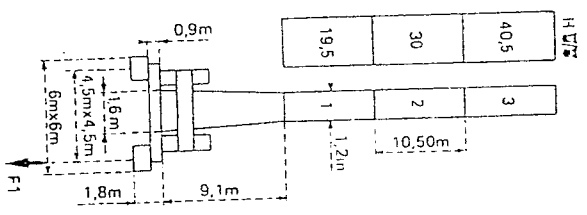
POTAIN



ZAm 259

H $\frac{V}{W}$ = H $\frac{V}{W}$ + 0,7m

PAm 259

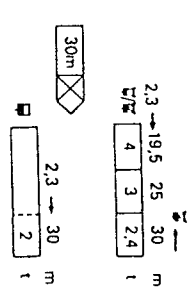
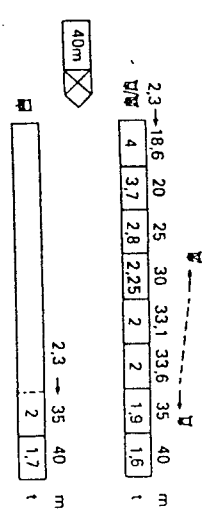
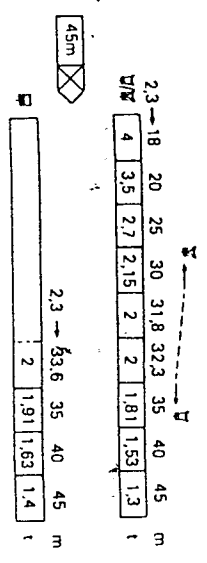


| | | |
|----|-------|-------|
| F1 | ● 381 | ■ 471 |
| | 251 | |

F = Réactions Eckdrücke Reactions Reacciones

| | | |
|----|-------|-------|
| F2 | ● 531 | ■ 681 |
| F3 | ● 371 | ■ 521 |
| | 211 | |

Fleche Ausleger Jib Flecha



W Standard 2/4 Strm.
 (En caso de utilización & de altura 0,1 t de las cargas W 1, 2 brin
 Carrot optional en 2 brins
 unquam.)

W Standard/Ausleger 2/4 Strm.
 (En caso de utilización & de altura 0,1 t de las cargas W 1, 2 brin
 Carrot optional en 2 brins
 rung mit nur 2 Strängen.)

W Standard trolley 2/4 fall
 (When using & Substrakt 0:1
 from the load W 1
 Optional trolley 2 fall only.)

W Carro standard 2/4 ramitas
 (En caso de utilización & qu
 ir 0,1 t de las cargas W 1)
 Carro optional en 2 ramitas
 adamente.)

- En service
- Hors service

- In Betrieb
- Außer Betrieb

- In service
- Out of service

- En servicio
- Fuera de servicio

⊗ A vide sans test avec
 flèche et hauteur maximum.
 Maximalhöhe.

⊗ Without load and ballast
 with longest jib and maxi-
 mum height.

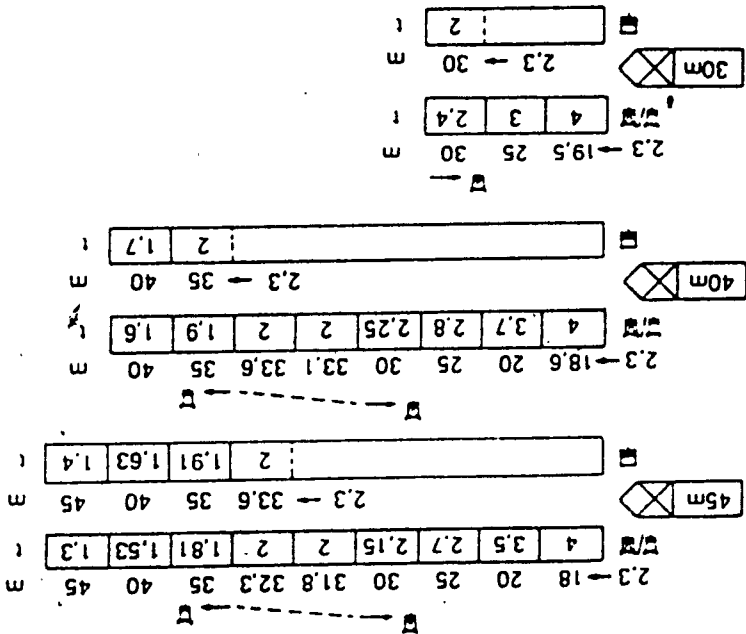
⊗ Sin cargas, sin lastre con
 flecha y altura máxima

Courbes de charges Lastkurven Load diagrams Curvas de cargas

Fleche Ausleger jib flecha

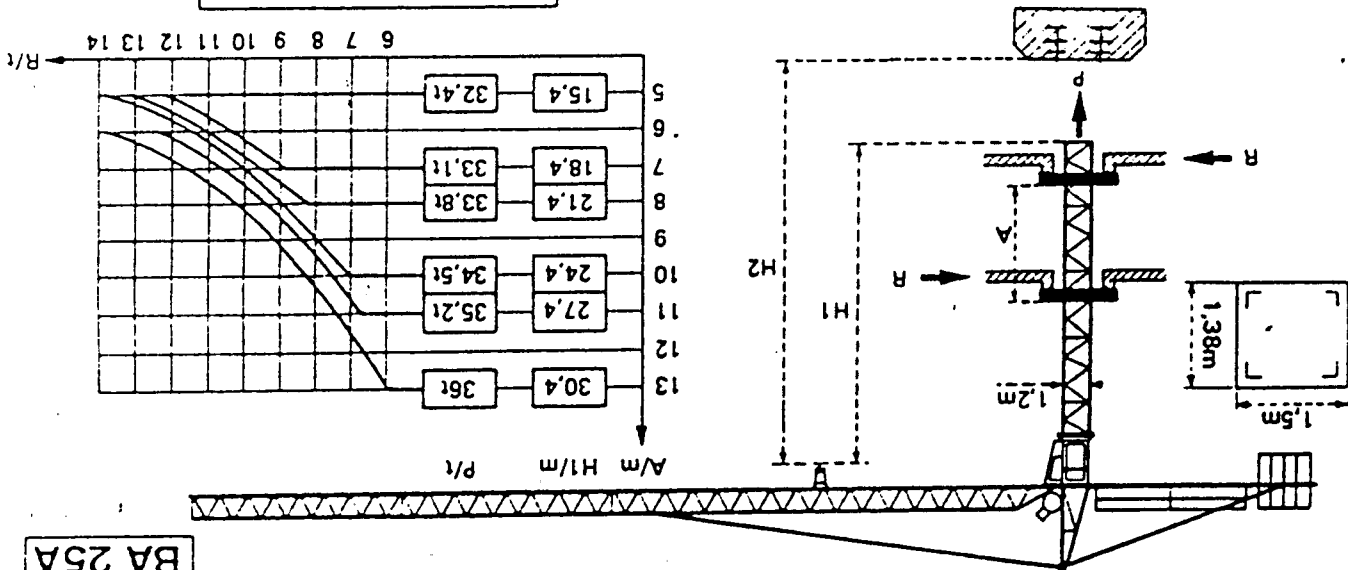
148

Standardbauteile 2/4 Stränge
 (En cas d'utilisation = obture
 0,1 t aux charges = 1
 Charriot optionnel 2 brins
 unidirectionnel
 Standardbauteile 2/4 Stränge
 der Lasten von abzurufen
 Laufkatze in Sonderausfüh-
 rung mit nur 2 Strängen
 Standard trolley 2/4 fall
 (When using = subtract 0,1 t
 from the loads = 1
 Optional trolley 2 fall only
 Carro standard 2/4 ramales
 (En caso de utilización = obtu-
 rar 0,1 t de las cargas = 1
 Carro opcional en 2 ramales
 bidireccionales



Telescopage sur dalles - Kletterkrane im Gebäude
Climbing crane - Telescopage grues trepadoras

BA 25A



A Distance entre cadres / Abstand zwischen den Rahmen
 H1 Hauteur grue / Kranhöhe
 P Poids de la grue / Krangelgewicht
 R Réaction horizontale / Horizontalkraft
 (En service) / (In Betrieb)
 A Distance between collars
 H1 Crane height
 P Crane weight
 R Horizontal reaction
 (In service)

● En service / In Betrieb
 ■ Hors service / Ausser Betrieb
 ● In service / In service
 ■ Fuera de servicio / Out of service
 ● En servicio / In service
 ■ Fuera de servicio / Out of service
 ● Sin cargas, sin lastre con flecha y altura máxima / Without load and ballast with longest jib and maximum height.
 ● Sin cargas, sin lastre con flecha y altura máxima / Without load and ballast with longest jib and maximum height.
 ● Sin cargas, sin lastre con flecha y altura máxima / Without load and ballast with longest jib and maximum height.